

# Mining

Z I M B A B W E



Civils | Mining | Irrigation | Casings | Ducting



SABS  
ISO 9001

SABS  
ISO 14001

SABS  
ISO 18001

SAPPMA



At 150 years, the tortoise generally has one of the longest lifespans. At Proplastics we are inspired to manufacture products that stand the test of time, our products are dependable and reliable for generations with over 50 years of performance guaranteed.

### Invest in Pipe Systems That Last

■ **For more info call us on**

**Head Office & Works:** No. 5 Spurn Rd, Ardbennie Harare.

T: 0242 - 621651-5, 0773 888 923 / 0773 894 561

**Harare Show Grounds Shop**

T: 08644219155, 0242 751 735

**Bulawayo Branch** Millitary Rd (off Khami Rd), P.O. BOX RY115, R

T: +263 029 68396, 62059

E: [sales@proplastics.co.zw](mailto:sales@proplastics.co.zw)



[www.proplastics.co.zw](http://www.proplastics.co.zw)



UD TRUCKS

**Quester**

Made To Go The Extra Mile

**TESTED & PERFECTED FOR AFRICA**



**• Hub Reduction • Fuel Efficient • Maximum Uptime**



**CROCO COMMERCIAL**

Harare Showgrounds  
**Harare** : (0242) 771973  
Arthur: 0772 877 837 | Braveman: 0772 285 491  
Ruth: 0777702216 | Hatson: 0774822199  
Chekwa 0773204617 | Remember: 0775 808 157

**Bulawayo** : (029) 460 624/626  
Erick: 0772 601 772 | Johanne: 0773 790 916

**Chiredzi** : (0231) 3391-6  
Godfrey: 0772 285 382 | Farirayi: 0772 477 461  
**Masvingo** : (039) 264 833, 263 608 | Stephen: 0772 302 118  
**Selous** : (0628) 44886/7

[www.crocomotors.co.zw](http://www.crocomotors.co.zw) | [sales@crocomotors.co.zw](mailto:sales@crocomotors.co.zw)

# Mining

Z I M B A B W E

Dedicated to the Zimbabwe Mining Industry

## Editorials

Editorial Director  
editor@miningzimbabwe.com  
Tel: +27 11 875 2131

Writers/ Journalists  
Justice Zhou  
justice\_zhou@yahoo.com

SALES AND MARKETING  
Kenneth Mutasa Sales Consultant  
kenneth@miningzimbabwe.com  
Tel: +27 11 875 2131

Michael Ncube, Sales Consultant  
michael.n@miningzimbabwe.com  
Tel: +27 11 875 2131

PRODUCTION  
Keith Sungiso  
keith@sungiemia.com  
Tel: +27 11 875 2131 | +27 81 597 7717

PUBLISHER  
Sungie Media (Pvt) Ltd

## ABOUT PUBLICATION

Mining Zimbabwe is the premier source of Zimbabwe Mining news. Our core focus is on the ever evolving face of the mining industry, trends, new technologies being developed and used to improve this crucial sector, as well as new opportunities and investments arising from it. Mining Zimbabwe sole purpose is growing and empowering the mining industry and highlighting all its challenges as well as putting forth expert solutions.



## CONTACTS

2 Main road, Kyasands, Johannesburg 2188  
Tel: +27 11 875 2131 | **Whatsapp:** +27 81 897 7717  
**Advertising:** keith@sungiemia.com  
**For more info:** admin@sungiemia.com  
**Web:** www.miningzimbabwe.com

# Inside Mining Zim

Mining Zimbabwe Magazine | October 2018



## Inside Mining Zimbabwe

### 04 Word from the Editor

#### MINING MATTERS

### 06 Zimbabwe mining companies mechanisation headache

### 10 Small-scale mining Should be reserved to locals

### 14 UD TRUCKS Tested and Perfected for Africa

### 18 WACKER NEUSON Spread tentacles into Zimbabwe mining equipment supply

### 21 Universal speed measurement for explosive areas- Hand tachometers = RHEINTACHO

### 24 LAND DEGRADATION Flagged in small Scale mining

### 28 Challenges Facing Mining Businesses and possible solutions

### 32 All Minerals and location found in Zimbabwe

#### Our Kind Advertisers

- **PROPLASTICS** (Cover)
- Kanu Equipment
- Croco Motors
- Hilti Zimbabwe
- Freightworld
- Smart Building solutions
- Marverick generators
- Chipan Investments
- XOX
- Fuchs
- Vendel Equipment Sales
- Uge Earth moving solutions
- Nicholas Scale
- Estrimanzi
- Minrom
- Rheintacho
- Bonnox
- Worley Parsons
- Trailmax
- Curechem
- AMSI
- Ownland Suppliers
- Boltgas
- Distributed Power Africa
- G & T Scales

# Injecting life into the Zimbabwe Mining industry

Greetings to you all our most valued readers. We are super excited to be exhibiting and distributing our copies here at Mine Entra 2018

The much anticipated mining companies exhibition expo dubbed the "Mine Entra" is among a host of things expected to inject life into the ailing economy.

The Zimbabwean economy for the past two decades has been under intensive care but mining and agriculture have managed to stand tall in anchoring the economy, which has been suffering from years of gross mismanagement and corruption.

In as much the mining sector has been the vital cog in the economy, a host of factors have on several times threatened this much coveted sector. At one time the sector almost faced a total collapse when the then Government led by Robert Mugabe

introduced the draconian indigenisation legislation which almost crowded out investments.

The Mining Entra which will be held on the 10th to the 12th of October 2018 is expected to address a majority of factors affecting the local mining sector, chief among them the need to mechanise and modernise mining operations across the spheres of the country.

Regarded as "the platform" for meetings, networking, and sharing of innovative ideas, the objective of the expo is to bring together the cogs that make Zimbabwe's mining sector continue to move forward.

This however becomes the most appropriate time to hold this expo at a time when the country has just introduced a new political leadership which has already started to inject new blood and policies aimed at revitalizing mining and the economy as a whole.

Mining Zimbabwe as the leading mining publications in the region finds this expo as a vital platform for insermination ideas and how they could be implemented for the betterment of the country's economy. Having been re-vitalised with the new dispensation the Mining Zimbabwe platform has been a provider of valuable intelligence to the Mining Community and a platform for business transaction. in the mining industry and this however sums up the role that Mining Zimbabwe will play in this mining expo.

Mine Entra is organised by the Zimbabwe International Trade Fair Company, the leading international exhibitions, events and conference organiser in the country.

We love to hearing from you, please feel free to leave your comments on our social media pages and you can also write to us by email or by whatsapp





**OFFICIAL ZIMBABWE PARTNER**

**PRIME AGENCIES**

11 Williams Way, Msasa, Harare

info@hiltizim.com

+263 (242) 447 570/1

0777 743 743 /0773 217 225

**Why Hilti is relevant to Mining and processing**

**High value equipment** installed with reliable and specified anchors (some with dynamic loads), no failure accepted

- **Global manufacturers** have stringent standards on loading, vibrations and need global approvals
- **Upgrades projects** in existing facilities happen every often to increase production (where whole production line is re-installed) & many new build projects
- **Relevant Hilti product portfolio** with a variety of solutions
- **Services**

Tool repair, on site training and engineering backup for designs.

**Focus Applications**

**Fastening on concrete (FoC)**

- Anchoring secondary structures, outfitting
- Anchoring of machinery (w/ dynamic loading)
- Rebar as anchor and doweling

**Fastening on Steel (FoS)**

- Grating, checker plate
- Light duty cable management
- Fastening of shear connectors (HVB)
- Fastening of fireproofing mesh
- Grounding, earthing
- Fastening on rock

**Electrical & Instrumentation**

- Light duty (cable tray)
- Medium duty (cable tray)
- Integrated floor systems (IFS)
- HVC & busbar supports
- JB and E&I stands
- Tubing \*\*\*

**Fire Protection**

- Thru penetrations
- Fire protection for cables (coatings)
- Cable transit system

**Multi Purpose Tools**

- Drilling / Demolition
- Fastening & assembly (incl. bolting)
- Diamond coring / cutting
- Leveling & alignment
- Detection





**WE ARE THE BEST OPTION FOR:**  
*International Sea/ Road/ Forwarding*  
*Local customs clearing bonded and general warehousing*



- *Do you have any mining equipment, machinery cargo to import and export?*
- *Are you struggling in import and exportation of your goods and services?*

**We, at Freight World make your loads lighter and give you peace of mind**

**We boast of more than 150 years combined Senior Management Experience in Shipping and Forwarding and Customs Clearing**



**FREIGHT WORLD**

A service that is **BRANDED**



**FREIGHT WORLD**

**HEAD OFFICE**

100 KELVIN RD, GRANITESIDE  
 HARARE, ZIMBABWE  
 TEL: +263-4-758 766/7/8/9  
 263-4-755 595/9  
 FAX: 263-4-758 770  
 admin@freightworld.co.zw

**BRANCHES:-**

- SALES OFFICE
- FORBES BORDER POST
- BULAWAYO
- GWERU
- BEIRA
- NYAMAPANDA BORDER POST
- PLUMTREE BORDER POST
- BEITBRIDGE BORDER POST
- MUSINA
- JOHANNESBURG
- DURBAN

# Zimbabwe mining companies mechanisation headache

*.....Foreign currency shortages remain an albatross*

**T**he Zimbabwe mining landscape has been one of the most endowed in terms of the value of minerals but to date the country has continued to wallow in subject poverty, where the majority has failed to fully benefit.

The question has continued to be asked “why?”

The availability of aging and outdated equipment has proven to be an albatross hanging around most local mining companies, where in some notable mining houses they are still boasting of equipment as old as 50 years yet the mining world had drastically changed.

There has been a massive shift with regards to technology and latest equipment in mining but Zimbabwe has been lagging behind on that front.

The Southern African country's mines require about \$11 billion to revamp equipment for better efficiency in order to increase the sector's contribution to gross domestic product

Zimbabwe has failed to fully feel the gains from the mining sector as extraction methods being employed by some companies have proven to be ineffective, ineffective and cumbersome. It is quite surprising that to date only about three companies are using the latest technology in mining.

At the moment only Zimplats, Unki, Mimosasa and partly Caledonia are the



Old Case excavator

flagships in terms of using the latest technology but looking at our neighboring South Africa, latest mining equipment and technology has made a massive difference in terms of how the 21st mining is conducted.

There have been repeated calls from Government and together with mines representative bodies that mine needs to mechanise with the latest equipment but the issue of funding availability has proven to be an elephant in the room.

The situation has further been exacerbated the continue acute shortages of foreign currency on the



Mzi Khumalo

financial market where most firms have since resorted to black market.

To further worsen the situation has been the skyrocketing of exchange rates of the RTGS to the United States Dollar which has since hit 100 percent mark. This has become a toll order for most companies to retool while big firms have not been facing such situations since they already export.

Metallon Gold Corporation chairman Mzi Khumalo joined the bandwagon by noting the need to mechanise and coming up with the latest mining technology in the Zimbabwe mining landscape and the setting up a Sands Retreatment Plant in Mazowe by the mining group bears testimony to his utterances.

“We have a programme in place aimed at mechanizing our mines and bringing in new technology,” said Khumalo recently.

Chamber of Mines Zimbabwe president Batirai Manhandu this year noted the need for mines to invest heavily towards recapitalisation and re-equipping their operations to improve operational efficiencies.

**FACT**  
*The Southern African country's mines require about \$11 billion to revamp equipment for better efficiency*

Manhando said the machinery at most mines are over than 50 years old—making them less productive and effective against developments.

Gold, nickel, cobalt and coal miners among others are all operating below their installed capacity with only one exception-platinum producers.

“The local mining industry is currently operating below capacity on the back of capital shortages. At the beginning of the year the capital-intensive industry required \$7 billion for both ramp-up and sustenance capital. The figure has lately been revised upwards to \$11 billion with renewed interest in our sector,” Manhando said recently.

The mining sector has over the last few years emerged as one of the strongest pillars on which economic recovery will lean and in this regard Government has been commended for its efforts to facilitate resumption to full production by big mining firms as enunciated by President Emmerson Mnangagwa.

Zimbabwe boasts at least 40 minerals, with the Great Dyke being home to some of the richest mineral deposits on the continent. This country is renowned globally for its platinum resources, diamond and gold deposits, chrome and other such minerals that have potential to transform this country into the Switzerland of Africa but efficient mineral exploitation has been compromised by inadequate capital, machinery and the export of unprocessed raw minerals instead of the finished product.

For years the country has boasted of what is in its belly in terms of mineral



*Hitachi Excavators*

*A growing appetite by mining companies to purchase new equipment but the challenge has been around the availability of foreign exchange*

deposits but has not had the wherewithal to exploit these to improve the economy. Zimbabwe breaks world records and in some instances comes second only to South Africa in terms of mineral deposits but output figures have not been that encouraging.

Most mining operations suffer from undercapitalisation and are, therefore, in need of recapitalisation through financial injections. Most mines are currently operating slightly above 50 percent of their designed capacities due to lack of finances for recapitalisation.

Most mining operations suffer from undercapitalisation and are, therefore, in need of recapitalisation through financial injections. Most mines are currently operating slightly above 50 percent of their designed capacities due to lack of finances for recapitalisation.

Mining equipment supplier Graeme Loxton told Mining Zimbabwe that there has been a growing appetite by mining



*Graeme Loxton*

companies to purchase new equipment but the challenge has been around the availability of foreign exchange. He said the biggest hit in terms of failure to purchase latest equipment have been smaller mining companies that are not yet exporting their products. A perfect example is the guys doing lumpy chrome and selling locally.

“There is business in as far as purchase of mining equipment is concerned but the only hindrance has been around the availability of a guarantee and availability of foreign currency because looking at the current situation you would see that equipment like a 25-30 tone excavator is going for approximately \$173 000 and to raise that in foreign exchange terms and the rates obtaining on the local market its quite a challenge,” said Loxton.

Zimbabwe has a diverse and well-developed mineral sector, which is steadily recovering from an economic low and has immense potential to anchor inclusive economic growth and development. The mining sector has been identified in the economic blueprint, the Zimbabwe Agenda for Socio-Economic Transformation (ZimAsset), as one of the engines for growth and transformation of the economy alongside the agriculture sector.



# KANU EQUIPMENT

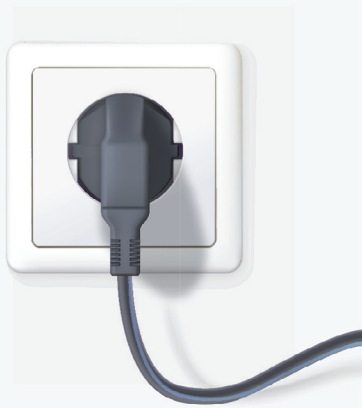
EXPERIENCE THE SUPPORT

Backed by experienced maintenance teams on 24-hour standby, Kanu Equipment Zimbabwe provides critical and long overdue support to ensure continuous operation, minimal down-time and a leading advantage of reduced costs over the extended life-cycle of the machine.



BULAWAYO | HARARE | HWANGE

[www.kanuequipment.co.zw](http://www.kanuequipment.co.zw)



# Powering industry through solar energy

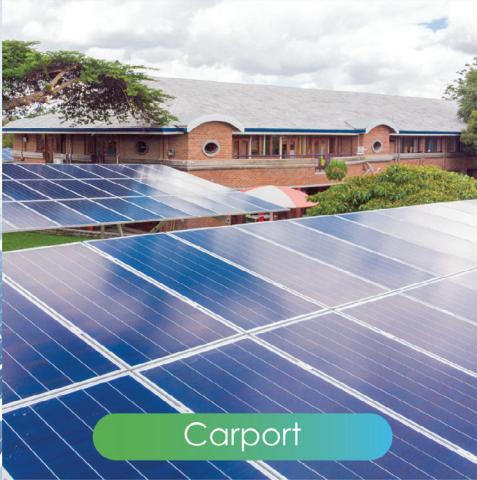
DICOMM, McCANN 117035



Ground mount



Rooftop



Carport



Distributed Power Africa is committed to powering Zimbabwe through solar energy. With tailor-made solar solutions for everyone, we've got the energy solutions your business needs.

#### Our commercial and Industrial Offer:

- Zero start-up investment costs - we raise the finance and offer a 15 year lease model
- Zero financial or technical risk - only top tier equipment is used
- Zero maintenance costs - we operate, monitor and maintain the plant
- Insurance is included
- Intelligent energy efficiency and management systems
- Plant performance is guaranteed within 90% of the planned annual yield
- Monthly lease premiums that are below your current blended energy cost



**Zimbabwe:** 8 Earl Road Willowvale, Harare  
**South Africa:** Anslow Office Park, 8 Anslow Lane, Bryanston, 2146

[enquiries@dpafrica.com](mailto:enquiries@dpafrica.com) | [www.dpafrica.com](http://www.dpafrica.com)



*Small scale miners at work*

# Small-scale mining

## Should be reserved to locals

***Analysts in the mining sector are of the opinion that foreign investors should play a role in big mining operations and leave small scale mining to locals, a sector which does not require a lot of capital.***

Zimbabwe small-scale and artisanal gold miners has of late in more than 10 years, emerged as the cornerstone of the sector after smashing production records, producing and delivering more gold and notably in chrome more than large-scale mining houses.

Such a scenario however has attracted massive appetite from foreign investors and nations to spread their tentacles in small scale mining, a situation that has since been dismissed by analysts as tantamount to stunting growth of the sector.

The country's primary producers yielded 24,8 tonnes of gold in 2017, according to official data. The sector has recovered from its three tonne nadir recorded at the height of Zimbabwe's economic crisis in 2008, but is still short of the 27,1 tonne peak reached in 1999.

Government has supported the artisanal miners who have increased use of improved mineral processing technology through a \$40 million gold development facility by the central bank, targeting 179 small-scale miners. There has also been some interventions being put in place in the chrome sector.

Analysts in the mining sector are of the opinion that foreign investors should play a role in big mining operations and leave small scale mining to locals, a sector which does not require a lot of capital. "Yes they should not, under any

circumstances, we cannot grow the industry if foreigners continue to invest in the small scale sector, and simply because for the most part small scale mining is not capital intensive as such if you do not put much money into it you have no reason to stick around when things get difficult.

"Also its difficult to implement programs and best practice methods in the sector as it is, now with foreign nationals there are under no obligation to do things properly and you have to step around them with caution as government because you don't want to be seen to be stifling investors," said analyst Tatenda Maisva.

In 2016, Zimbabwe's gold mining sector as a whole, consisting of both artisanal and small-scale mining and large-scale gold mining, contributed 2.6 percent of

*Foreign investors should play a role in big mining operations and leave small scale mining to locals - ANALYST*

# Small-Scale mining should be reserved to locals

of gross domestic product, 18 percent of exports, 28 percent of mining output, and 1 percent of government revenues (royalties only) and employed 7.1 percent of the labor force.



ASGM is perceived to contribute significantly to these figures and, therefore, to the growth and development of Zimbabwe's economy. However, there is limited evidence of the scale of the contribution and how it has evolved over time.

Zimbabwe has a long and interesting small scale mining history, which includes the vertical movement over the last century of many mining operations from small in scale to medium and large in scale.

Following this period, over the past three decades, there was exponential growth in the population of artisanal and small-scale miners, fueled by record unemployment, high commodity prices, and a decline in agricultural activity due to droughts and economic downturn.

Government has interacted with ASM in myriad ways over these 30 years: from ignoring the growing sector during the 1980s to becoming a global leader in engaging the sector during the 1990s (via pro-poverty interventions such as legalizing gold panning and stabilizing gold prices).

During the early 2000s, against the background of deteriorating economic conditions, the government sought to increase the flow of gold to its official buyer, Fidelity Printers and Refiners (FPR), and offered low-interest equipment loans, liberalized gold buying, and provided technical support through MAMD.

Although these interventions succeeded in boosting the production of gold, most of it ended up on the informal market, and the government responded with fury in the form of Operation Chikorokoza Chapera, which effectively criminalized ASM and adversely affected many legitimate small-scale miners and custom millers.

In recent years, government has begun to reconsider formalization of ASM. The government's evolving stance on ASM has affected the interactions of nongovernmental organizations (NGOs) and donors with the sector, as revealed by the lack of any involvement during the 1980s, by the many different projects introduced during the 1990s, and by NGO and donor reluctance to directly engage the sector in the years.



*"Old fashioned values, modern ideas"*

**FOR ALL YOUR  
FASTENING REQUIREMENTS**



**XOX Bolt & Nut (Pty) Ltd**

Our product range varies from Mild Steel and High Tensile Bolts and Nuts to Split Pins. We also have fasteners available in following finishes: Electro Galvanised, Hot Dipped Galvanised Stainless Steel and Brass. Fasteners also available in imperial sizes.

Tel: +27 10 591 6844 | [frank@xox.co.za](mailto:frank@xox.co.za)  
[www.xox.co.za](http://www.xox.co.za)

# LUBRICANTS TECHNOLOGY PEOPLE

- Technology driven lubricants developed by dedicated professionals are our core business.
- Maintenance costs and breakdowns are reduced and maximised up-time allows productivity increases and maximum value from your equipment.
- Fuchs Lubricants, Technology that pays back.

## AVAILABLE IN HARARE AND BULAWAYO DEPOTS:

Harare Depot: 19 Paisley Road,  
Southerton  
Tel: (+242) 755470/756210/751304-6  
Email: sales@fuchs.co.zw

Bulawayo Depot: Bay 4, Doncaster  
Industrial Park 16th Avenue / fife Street  
Extension Tel: (+29) 884035/37  
Email: sales@fuchsByo.co.zw



## VENDEL EQUIPMENT SALES (PTY) LTD, T/A ASSOCIATED EQUIPMENT

New, refurbished and reconditioned road building and earthworks equipment (Over 20 years in the business !!!)



### CONTACTS

P O Box 3716, Honeydew, 2040  
Plot 92 Indaba Lane –  
Rietfontein, Roodepoort  
South Africa

Telephone: +27(11) 801 4911/2  
E-mail: associated1@xnet.co.za  
CONTACT: Cyril – Cell +27(0)83 626 5588 or  
Jaap- Cell: +27(0)82 892 1327 | Fax: +27 (11) 801 4914  
Anton- Cell: +27(0) 82 923 5397

### For Tyres contact Loraine

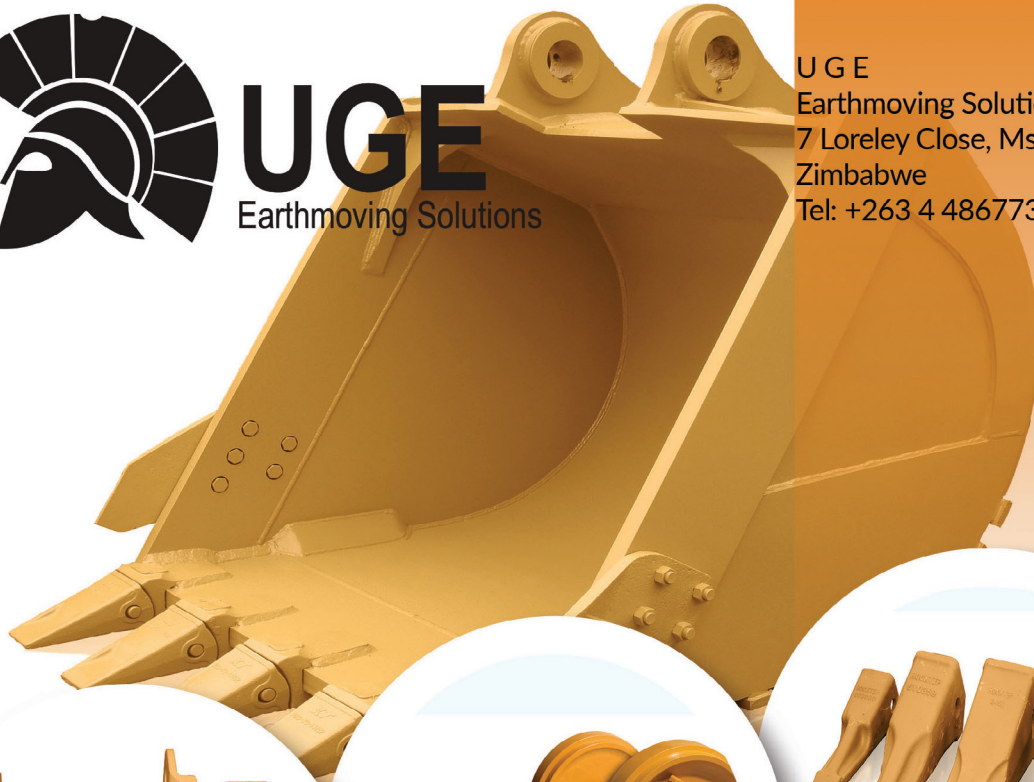
+27 (0)11 801-4911 /2 or Cell +27(0)76 021 4344  
E-Mail: associatedloraine@xnet.co.za  
E-Mail: vendels@mweb.co.za

[www.associatedequipment.co.za](http://www.associatedequipment.co.za) | [www.vendelequipmentsales.co.za](http://www.vendelequipmentsales.co.za)



**UGE**  
Earthmoving Solutions

UGE  
Earthmoving Solutions  
7 Loreley Close, Msasa, Harare,  
Zimbabwe  
Tel: +263 4 486773/4




## EARTH MOVING SOLUTIONS

Proud Supplier of:

- ROCKTIP G.E.T SYSTEMS,
- VEMATrack AND ITM UNDERCARRIAGE.

GET IN TOUCH

 +Cell: 0772 573 692

UGE  
Earthmoving Solutions  
7 Loreley Close, Msasa, Harare,  
Zimbabwe  
Tel: +263 4 486773/4



# ***UD TRUCKS***

## ***Tested and Perfected for Africa***

The iconic UD Trucks are available in Zimbabwe at Croco Commercial and Duly Trucks, the official and authorised franchise holders of UD Trucks in Zimbabwe. UD Trucks recently introduced the Croner, the Quon and the Quester ranges to cater for the diverse market needs of customers in Zimbabwe.

### **UD QUESTER – MADE TO GO THE EXTRA MILE**

UD Trucks stand for “Ultimate Dependability”. To always run the extra mile in everything we do, UD Trucks leave nothing to chance, making sure customers in different economic sectors get an optimal transport solution for their varied businesses. The UD Quester is a great example of this approach. It is a reliable heavy-duty hero on the road and a champion on saving money for customers’ businesses. UD Quester is the first in a new generation of UD Trucks specifically developed for the world of heavy-duty construction. It derives from UD Trucks’ Japanese quality heritage and insights from African markets including Zimbabwe.



*The journey continues...*

# UD Trucks

## tested and perfected for africa

The UD Quester excels on endurance. It is a reliable and efficient truck – durable and easy to maintain and with outstanding fuel efficiency. It is a complete solution with first-class service and genuine parts you can trust.

Whatever your line of business, whether

it's long haulage, distribution, construction or mining we have a complete solution for



you. Quester is UD's most cost-efficient truck ever. Not only when you buy it, but also when you drive it. It cuts fuel costs and maximizes uptime, giving you quick dependable payback that will help you succeed with your business. The UD Quester can handle tough daily use on the construction or mining site.

### Robust and easy to maintain,

The Quester takes you to places that other trucks cannot reach, and also to higher profits thanks to its immense efficiency and productivity. It's a long-lasting, hard-working machine capable of getting the maximum work done, every single day.

With this truck UD Trucks wanted to provide customers with a flexible platform that adapts easily for any heavy transport operation. It provides the features you



need to build a successful construction business. And at the mining site, it keeps material moving at high volume to lower your cost-per-tonne. Whatever your

specification, our solution is always efficient and enduring. Quester is the optimum tool for the job and we are the most dedicated partner to help you run the extra mile.

The UD Quester is also the first to be developed with the global resources of the Volvo Group, of which UD Trucks now is a part. The UD Quester's passion is to make each and every customer's working day simpler and more productive. Whatever a customer's line of business, whether it is distribution, construction or mining UD Trucks has a complete solution. The Quester is UD Trucks most cost-efficient truck ever. The value is derived not only at purchase stage where the price is very competitive, but it is also derived at operating stage. The UD Quester cuts fuel costs and maximizes uptime, giving customers quick

dependable payback that assists in business success.

### FIRST-RATE FUEL ECONOMY.

Quester has built-in fuel-efficiency. The wide driveline offer gives the ability to optimize the powertrain with respect to power output, transmission and rear axle ratio. A well specified powertrain ensures that the engine operates at its peak efficiency at all times, enabling good fuel consumption and high average speeds.

### Rough road toughness

**FACT**  
UD Quester  
can handle tough  
daily use on the  
construction or  
mining site.

The secret of Quester lies in its versatility. With Quester, UD Trucks offers a vehicle that allows customization for any transport requirement.

### Built to last. Designed to save time

The Quester is a reliable and productive truck, built with proven quality components. Simply put, an enduring and more serviceable truck customers will spend less time on maintenance and

more time working.

### Delivers more than you expect

A heavy-duty chassis with high flexibility and quality is one of Quester's main characteristics. The design of components comes from UD Trucks' proven commercial-vehicle technology. The entire chassis is subject to extensive tests in accordance with our global standards. This guarantees high reliability, good economy and a long life.

### Room for efficient driving

It's all about space. Quester's cab reduces driver's fatigue in long operating times. But a well-planned driver's environment also results in safer and more fuel-efficient driving.

### Proven technology. Solid performance

Empower your business. Our two engine

alternatives are designed with proven fuel-efficiency and superior performance for medium duty to heavy-duty applications. We are a step ahead in providing lower operating costs and increased productivity – making it easier for you to stay one step ahead of the competition.

### A powertrain for endurance

The heart of every Quester is the integrated powertrains that perform optimally because they're specially designed and manufactured to work together. They combine the efficiency and durability of a Quester engine with a first class selection of globally proven drivetrain components.

### Genuine After-Sales Support and Genuine Parts

The mantra in UD Trucks is that "It's just not the same without Genuine Parts". To

that end, Croco Commercial and Duly Trucks market UD products that are fully supported by way of genuine, affordable after-sales support and spare parts. Field visits for fleet customers are available to minimise on trucks downtime.

And we at Croco Commercial are your most committed partners. Let's get ready, set and go!

Visit **Croco Commercial** a division of Croco Motors at Harare Showgrounds or any of their branches in *Bulawayo, Gweru, Masvingo, Mutare, Selous, Chiredzi and Kadoma* are available for further support.

Contact them at sales@crocomotors.co.zw or visit www.crocomotors.co.zw . Alternatively contact Duly Trucks at 3 Bristol Road, Workington Harare or visit www.dulys.co.zw or

**UD – for Ultimate Dependability**

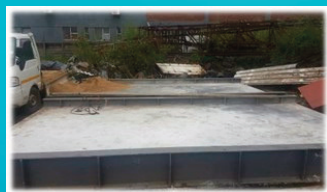
## NICOLAS SCALE

SUPPLIERS OF HEAVY DUTY WEIGHBRIDGES



ACCURACY  
VARIETY  
QUALITY  
EXPERTISE

FACTORY 33 HARROW  
ROAD BUSINESS  
PARK,  
CNR MARTIN DRIVE,  
HARROW ROAD  
MSASA HARARE



INDUSTRIAL  
RETAIL  
LABORATORY  
ALL WEIGHING  
EQUIPMENT


WWW.NICOLASSCALE.CO.ZW  
024 2485681 / 0772 216643

f @nicholasscalezim



## LPG "GAS" EXPORTED FROM S.A to ZIM



  
Estrimanzi (Pty) Ltd

Supply from SASOL, Petro SA and  
Richards Bay to Inroad Tanks

Call: +27 31 072 0556 | Cell: +27 71 603 4234  
mohamed@estrimanzi.co.za

www.estrimanzi.co.za



“Your Smart Building Partner”



56 Martin Drive Msasa,  
232 Samora Machel Ave, Harare



+263 242 447 748/9



[www.sbs.co.zw](http://www.sbs.co.zw)



[sales@sbs.co.zw](mailto:sales@sbs.co.zw)

**MAVERICK**  
GENERATORS



**GIVE US A CALL**  
**+27 12 819 1040**  
[www.maverickgenerators.co.za](http://www.maverickgenerators.co.za)

**WE POWER**  
**AFRICA**



- Original equipment manufacturers of generators from 13kva to 2250kva
- Synchronized plants up to 10,000kVA
- Generator control, auto mains failure and synchronization panels



410 Sakabuka avenue,  
Pumulani, Pretoria S.A



[www.maverickgenerators.co.za](http://www.maverickgenerators.co.za)



**+27 12 819 1040**



# WACKER NEUSON

Spread tentacles  
into Zimbabwe  
mining equipment  
supply

Munich headquartered construction equipment manufacturer, Wacker Neuson Group has announced its grand entrance into the Zimbabwean market through local company Pelgin Consultancy Services where it will be supplying of state of the art mining and construction equipment.

Wacker Neuson has been a proud manufacturer of premium construction equipment since 1848, with manufacturing facilities in Europe, United State of America and a new state of the art factory in China. The company manufactures over 300 products for the construction and agricultural sectors with several products also suitable for the mining sector.

Pelgin Consultancy Services managing

director Gary Moorcroft told Mining Zimbabwe that the company has cast its eyes into mining as well considering that some of its equipment has a major role to play in mining operations.

“The mining industry have many requirements for light to medium equipment which is not only limited to the construction industry. For example the new range of mobile, trailer mounted LED Lighting Plants have become very popular with the mines for use not only in open cast applications such as pit work at night, but around Processing plants and any other application that requires exceptional lighting.

“There are also products such as the new range of Skid Steer Loaders, ideally suited for work in confined areas often found



both underground as well as surface mining.”

Recently Wacker Neuson Group representative for South Africa Dennis Vietze said the global firm might consider setting up a manufacturing plant in Africa with Zimbabwe also presenting an opportunity for growth.

The German company valued at about \$1,7 billion has operations spanning across the Americas, Asia and Europe

“We have operations in America, Europe and Asia. But we don’t have any immediate plans to set up a manufacturing plant in Africa because of the volumes issues. We fully agree that Africa is among the fastest growing economies but the volumes at the moment do not warrant such kind of an investment. We are always open possibilities and in would say never say never

**The company has cast its eyes into mining as well considering that some of its equipment has a major role to play in mining operations.**

because it can happen.

“The change in political and economic situation saw us rethinking about our presence in Zimbabwe. So Garry Moorcroft (Pelgin managing director) was getting in contact with us about the changes and the new structure in the country and we had good kick off meeting in South Africa which saw us being here now,” said Vietze.



Wacker Neuson Group is an international family of companies and a leading manufacturer of light and compact equipment with over 50 affiliates and 140 sales and service stations. The group offers a broad portfolio of products, a wide range of services and an efficient spare parts service.

The product brands Wacker Neuson, Kramer and Weidemann belong to the Wacker Neuson Group. Wacker Neuson is the partner of choice among professional users in construction, gardening, landscaping and agriculture, as well as among municipal bodies and companies in industries such as recycling, energy and rail transport.

Moorcroft added that the increase in road construction projects in Zimbabwe is offering avenues for the German equipment manufacturer to supply the needed machinery.

## MINROM IS YOUR MINERAL RESOURCE MANAGEMENT PARTNER

**MINROM**  
managing mineral resource risk



### MINROM Specialises in Mineral Resource Management through:



Corporate Advisory Services, Due Diligence Investigations



Tenure Review's for the Resources Investor



Exploration Programme Deployment throughout Africa



3D Geological Block Modelling and Competent Persons Reports



3D Geo Metallurgical Modelling



Mineral Resource Management system and departmental development



Geological skills training and software implementation

CONTACT US TODAY : +27 (0)83 704 0243 | [info@minrom.co.za](mailto:info@minrom.co.za)

[www.minrom.co.za](http://www.minrom.co.za)

Safe measurement, indication and control of rotational speed



## Universal speed measurement for explosive areas Hand-tachometers = RHEINTACHO



**ZONE 1** | **ATEX approved**

**!** Coming soon.  
**■** Our brand new ATEX approved  
**■** Stationary Stroboscope.

[www.rheintacho.com](http://www.rheintacho.com)



# Universal speed measurement for explosive areas- Hand tachometers = RHEINTACHO

***Our mechanical handheld tachometers, HTM's, are designed to accurately measure RPM and surface speed on a wide range of applications.***

The HTM is a favored measurement device in several industries, including elevator maintenance, the mining industry, yarn and wire measurement and others. The large, clear and easy-to-read dial as well as the wide reading range with high definition make the mechanical hand-tachometers easy to use - without the need for any batteries!

Keeping in mind the need to operate tachometers in areas where there is a risk of explosive atmospheres due to either dust particles or gas, our engineers have carried out modifications to enable this version to be certified for use in ATEX Zones 1 and 2 for use in all gas groups with a temperature class of T4 and also makes it suitable for mining applications I M2c. This certificate approves use in underground mining applications. The device has been designed for short term observation and measurement, not for continuous operation.

The ATEX HTM measures rotational or linear speed using various special contact adaptors supplied with the instrument. With no need for batteries, it has the safety and flexibility to satisfy the most demanding requirements for maintenance and calibration. The reference numbers: EX II 2 G D C II C T4, I M2 c

Easily identified by its yellow,

ergonomically-designed casing, the ATEX HTM is available in four different models and is supplied in a hard plastic carrying case complete with a set of adaptors.



The production range incorporates a wide range of solutions of a high technical quality, principally in the field of rotational speed: sensors, hand-held measuring devices, rotary encoders and switching devices.

**RHEINTACHO UK Ltd**, a subsidiary of the German company RHEINTACHO Messtechnik GmbH and formally known as Foundrometers Instrumentation, is specialized in the production of non-electronic measurement and indication instruments as well as tachogenerators, and acts as a sales and service center for the UK and Ireland.

For over 115 years now, the German parent company RHEINTACHO Messtechnik GmbH has had a long standing tradition and has been engaged in the field of rotational speed, a crucial



control quantity for mechanical processes. In-house product development, production and assembly departments guarantee quick and innovative solutions to customers' individual requirements.

Further products from RHEINTACHO are:

- Rotational speed sensors for the harshest environments
- Digital hand-tachometers rotaro and redpoint as well as ATEX certified mechanical hand-tachometers htm that measure or record rotational speeds and run lengths
- Portable and stationary stroboscopes with LED or XENON technology that are instruments for the visualization of very fast movements
- Speed monitor systems, such as the programmable rotas, that measure the motion of engines, machines & systems
- Electrical indicators that visualize process factors such as rotational speed, velocity, flow, positions and filling levels

Typical applications of RHEINTACHO products are:

- *Mobile hydraulics*
- *Large engines*
- *Wind power*
- *Material handling*
- *Electric drives*
- *Service & Commissioning*

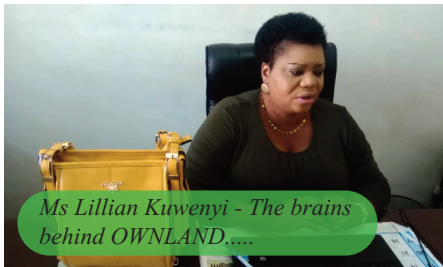
Our aim is to meet our customers' every need by consistently producing the best possible rotational speed measurement product at a competitive price. Since this also means providing an excellent all round service we place great emphasis on optimizing levels of cooperation, reliability and continuity.

**FACT**  
Safe measurement,  
indication, and  
control of rotational  
speed =  
Rheintacho

# OWNLAND SUPPLIERS

**OWNLAND SUPPLIERS** is a fast leading designer and supplier. We design and manufacture equipment based on industry technical requirements.

The company's aim is to design and supply quality endorsed products (**all technical engineering components**). **OWNLAND SUPPLIERS** has built a successful story in the industry as a result of its **technical expertise and superior service**.



*Ms Lillian Kuwenyi - The brains behind OWNLAND.....*

Dedication to service excellence is the philosophy that has enabled **OWNLAND SUPPLIERS**, to move from **Strength to Strength** since its formation in 2007. With a client base expanding, we believe it is fundamental to focus on individual clients' needs. We fully understand all our clients' needs and offer them **assistance, advice, best prices and service excellence** said **Ms Lillian Kuwenyi** the founder of **OWNLAND SUPPLIERS**.

### Markets served

- Power Generation • Petrochemical Industry
- Mining and Mineral Processing
- Food and Beverage Production
- Chemical and Fertilizer • Tobacco Industry
- Building and Industrial Equipment
- Repairs and Maintenance solutions
- Dust and Air Pollution • Health and Safety

All our products are **ISO Certified**. Each component/ product can be supplied with an **official pressure test certificate**



## OWNLAND SUPPLIERS ZIMBABWE | SOUTH AFRICA DESIGNERS | SUPPLIERS



We supply, do sizing & installation of all types of pumps, from Centrifugal, Vertical, Submersible etc..

**We Design and Manufacture equipment based on Industry's Technical requirements e.g Heat resistant Telescopic Canvas Chutes, Fibreglassed Industrial gutters etc..**



### **ENECON SOLUTIONS; REPAIR, DON'T REPLACE!!!**

It is the solution for all your repair and maintenance needs. **ENECON** coatings offer solutions to erosion, corrosion, abrasion, cavitation wear and chemical attack problems to all your industrial equipment



### **HEAT RESISTANT TELESCOPIC CANVAS**

Ideal for; dropping light weight trash, packaging waste handling dust etc

**ADVANTAGES;** Environmentally friendly, Cost and Time saving



### **FABRICATION;**

This is the value added process that involves the construction of machines and structures from various raw materials eg metal and plastic

### **FIBRE GLASSING;**

We do fibre glassing for different plants especially in corrosive environments, customer come up with different thickness measurements for durability purposes

**Ownland Suppliers Zimbabwe**  
345 Affirmative Way, Willowvale,  
Southerton, Harare, Zimbabwe  
Telefax: + 263-8644057697, 4-611580  
Cell: +263 773 200 812



**OWNLAND SUPPLIERS**  
[www.ownlandholdings.com](http://www.ownlandholdings.com)

# Professional weighing solutions in Southern Africa

*G&T Scales Services vision is to be the partner of choice in providing professional weighing solutions in Southern Africa.*

We all the required services and tools for a number of industries. In our portfolio we supplied weighbridge scales, platform scales, precision scales, crane scales etc. to most heavy industries these include mining and construction.



Platform Deck Scales

Mining industry has a variety of needs in terms of weighing solutions. These needs vary depending on nature of material being measured. Large boulders of mineral rocks can be weighed on surface heavy duty scales and these comes in different sizes and dimensions. The idea is to have a most reliable measure of inertia of each the object of interest. Mining requires extra accurate scales for measuring granules of minerals like diamond, gold etc. To accomplish this we use precision scales which offers a high degree of accuracy and these operate in a very tight environmental controlled space as the slight windy or noisy and vibrational conditions affects the readings of the scale.

We have a number of good brands of precision weighing scales. We offer very reliable calibration services time to time to ensure a consistent and accurate reading always. Several factors affect the accuracy of every weighing machine and requires services and calibration within



Surface Weighbridge Scales

stipulated period of time.

Technical adjustments on the surfaces and surroundings of the scale are put into account to ascertain a reliable and best



Precision Scales

measure of the quantity being measured. Weighbridge scales are the largest group of the scales we provide. G&T Scales Services offers this solution from point of all civil works to the installation of the weighbridge itself. Training for all users of the system is conducted to ensure effective use of all functions of the weighbridge. There are a number of categories in this group of scales where we have movable and non-movable weighbridges. These serves different purposes depending on size of what is being measured.



Surface Weighbridge Scales

Construction industry has equivalent needs to that of mining sector. Heavy vehicles with loads of cement or bricks can be measured on weighbridge scales to determine load quantity. Crane scales are used to give the digital measure of



mass of the material being used to accomplish a specific task or role in the construction process.



KG Series Industrial Crane Scales

G&T Scale Services is there to make sure all measurable quantities are measured with a high degree factor for the durability of structures and business viability. We supply and service all the heavy duty scales.



Surface Weighbridge Scales

The service department is well equipped with enough tools and you are assured of less down time in the event of weighing system failures. We are very open for inquiries and suggestions feel welcome to visit our premises and you will get a hospitable welcome and comfort, it is you our customers who drives us forward.

#### HEAD OFFICE

G and T Scale Services , Zimbabwe  
204 Robert Mugabe Road  
Eastlea, Harare  
Tel: +263-4-49888/4| Fax: +263 498885  
Email: sales@gandtscales.com

#### BULAWAYO BRANCH

G & T Scale Services (Pvt) Ltd  
Robert Mugabe Road, Bulawayo  
Email: salesbyo@gandtscales.com

# LAND DEGRADATION

## Flagged in small Scale mining



*Small scale miners at work (basa sebasa)*



A red flag has been raised with regards to incessant unfaithfulness which continues to be shown by several small scale miners (both gold and chrome) where they have become the biggest perpetrators of land degradation.

There has been an outcry from several corners of the nation that small scale miners both in gold and chrome sectors have not been paying attention around land rehabilitation but rather focused only on the extraction of the precious minerals. "When we come back to our industry of mining, we know for a fact that small scale miners in Zimbabwe are the highest producers of Gold but check the areas from where the Gold is coming from its deteriorating by the day environmentally and economically.

We are not being faithful exploiters of resources to our communities and its people. Faithfulness as a miner is being able to disclose to your

government that as we were mining gold we also discovered diamond," said a concerned mining industry player could not be named.

Zimbabwe Miners Federation secretary general Lindi Mpofu told Mining Zimbabwe that the issue of land degradation is prevalent in the small scale mining front.

She said a lot of fundamentals still needs to be met so that small scale miners would be held accountable for the mining activities they are carrying out across the country.

"Yes its true that there has been prevalent land degradation across the country and

first it should be noted that in the gold sector there are two groups of small scale miners. Those are the ones with their own claims and the popular makorokoza ,who have no claims and who go around digging the whole country searching for gold. Those makorokoza have been the ones behind massive land degradation. The same is also happening on the chrome side," said Mpofu.

ZMF spokesperson Dosman Mangisi raised the same concerns citing poor mechanisation as the major reason behind the land degradation problem.

"It's true that land degradation is taking place. Key factors are a result of poor mechanisation, poor mining methods, use of metal detectors all these results in land

**FACT**  
*Key factors are a result of poor mechanisation, poor mining methods*

# Land Degradation flagged in small scale Mining



Poor mining methods at play

degradation," said Mangisi.

Government this year ordered all Chrome mining activities along the Shurugwi-Zvishavane Highway to stop due to the destruction that the unplanned extraction of the mineral has been causing to the highway.

Since the surge in Chrome prices on the world market, there has been an increase in the extraction of the mineral along the road – a development that has seen excavators and front end loaders being used by miners just a few metres from the Shurugwi-Zvishavane Highway.

Mashonaland Central is also another Province that has been the hardest hit in terms of land degradation. The Province is rich in gold and chrome.

Economist Paison Tazvivinga said it is evident that there has been massive land degradation in most mining areas especially those mined by small scale miners.

He added that land degradation should however not be portioned around small scale miners only because big players have not been doing much as well on the land

rehabilitation front.

"Yes it is evident that there is land degradation in most mining areas even those that are mined by small scale miners. But, for us to conclude that it's only small scale miners that are causing massive land degradation is not fair enough.

" If we visit some major mining towns we will witness areas that were left bare with land rehabilitation. So I believe we need to enforce land rehabilitation laws not only to small scale miners but to all mining companies," said Tazvivinga.

"If we are to gauge the percentage contribution of these mining companies based on revenue, profits and contribution to society in which they operate, the statistics may even point a different picture."

Tazvivinga said over and above land rehabilitation laws there is need also to enforce percentage contribution so that local communities benefit from mining operations.

**ADVERTISE**

REACH THOUSANDS  
OF MINING PLAYERS IN ZIMBABWE

info@miningzimbabwe.com



AUDIENCE

Facebook +7100

LinkedIn +1100

Website +1500 visits daily

*Rated 35th influential  
mining website in the world*

Sungie Media - Connecting you to your preferred audience and more.....



YOUR PREMIUM  
COMMERCIAL DEALER

OFFICE: (011) 918 4646

[WWW.TRAILMAX.CO.ZA](http://WWW.TRAILMAX.CO.ZA)



REAL QUALITY, REAL PEOPLE, REAL VALUE



**TRAILMAX**  
(PTY) Ltd

**REAL QUALITY**  
**REAL PEOPLE**  
**REAL VALUE**

OFFICIAL SUPPLIER:  
**TRUCK World** (Pty) Ltd

**SABS**  
ISO 9001





# TRUCK World (Pty) Ltd

**YOUR PREMIUM COMMERCIAL DEALER**

**OFFICE +27 11 918 4646**



**SINCE 1997**



PAUL: +27 82 852 5899  
ALBRICH: +27 82 578 2975  
CHRISTO: +27 61 987 6901  
TOBIAS : +27 82 451 2558  
ARIE: +27 83 459 3277  
paul@truckworld.co.za  
albrich@truckworld.co.za



*2013 VOLVO FH 440 T/T 6X4 ,  
FROM 721 000KM,  
FSH AGENTS, 3 AVAILABLE*



*2016 FREIGHTLINER ARGOSY  
2016 500 CUM NG  
209 987KM*



*2013 VOLVO FH 440 T/T 6X4  
4 AVAILABLE*



*2015 AFRIT SIDETIPPER  
INTERLINKS ,7 AVAILABLE,*



*2014 DAF VDL 66 SEATER BUS  
97 000KM*



*2013 SCANIA G460 T/T 6X4  
651 000KM*



*2015 SATB SUPERLINK FLAT DECK SUPERLINK*



*2016 UD TRUCK GW 26-450 T/T 6X4 ,  
351 000KM-7 AVAILABLE*

[www.truckworld.co.za](http://www.truckworld.co.za)



39 Viewpoint Rd, Boksburg  
[www.@truckworld.co.za](http://www.@truckworld.co.za)

[www.trailmax.co.za](http://www.trailmax.co.za)



**AUTHORISED DEALER**



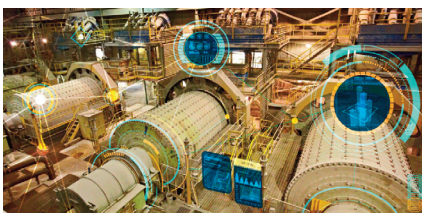
# CHALLENGES FACING MINING

## Businesses and possible solutions

**A**fter the ouster of the former President we've seen a general uptick in the mining market, with volatility easing off across a number of key commodities and a new renewed investor interest.

A new report from EY has highlighted the top 10 challenges and business risks that worldwide mining businesses should prepare for and possible solutions.

### Digital effectiveness



Mining companies are seeking to use new digital technologies to support their efforts to improve productivity and increase margins. However, the adoption

of these new technologies poses a number of serious challenges- the foremost being their effective integration into the operational aspects of the business. As EY's report highlights, companies should focus on using digital tech to solve the most urgent business problems first, before looking to roll such tech out on a wider basis.

### Competitive shareholder returns

With poor shareholder returns making headlines in recent years, the mining industry will be challenged to redress the balance in 2018. Expect to see mining companies prioritising shareholder returns through the allocation of capital to dividends and share repurchases over and above reinvestments in longer-term growth projects. As always, mining companies will have to play the balancing act

between short-term shareholder returns and long-term growth value. But it's clear that throughout 2018 shareholder returns will have to be the priority.



### New world commodities

Mining companies will need to ensure that they maintain the right mix of new and old world commodities in their portfolios throughout 2018. As consumer attitudes and technology mixes change, mining companies will have to adjust the composition of their commodity portfolios to match. A particularly



pertinent example within the report, which highlights the dilemma facing mining companies, goes as follows: “almost half of all platinum produced globally is used in catalytic converters to minimise diesel pollution. Some estimates suggest that the adoption of EVs will result in a 7.5% decline in platinum demand by 2025.” Mining companies need to be careful that they don't end up holding commodities within their portfolios for which there is zero or negligible demand in 2018.

### Regulatory risk

Governments, and their regulatory bodies, are increasingly adopting a stance of ‘resource nationalism’ as they seek to generate a greater return from (and oversight of) their natural resources. This is a trend that is only set to increase through 2018. EY's report suggests that mining companies mitigate the risks that this development brings by “keeping abreast of proposed regulatory changes and maintaining open and transparent communications with all levels of government and their regulatory bodies.”

### Cash optimisation

“

Other potential solutions include the creation of partnerships as a means of expanding resource bases and investing in new technologies and software applications to achieve higher exploration success rates.

”

The cost cutting exercises and efficiency gains achieved by many mining companies in recent years means that now commodity prices have recovered, companies are achieving higher margins and have significantly improved cash generation. As a result, a key challenge throughout 2018 will be ‘cash optimisation’. Or in other words, how best should companies make use of their newly found cash? How best should capital be allocated between shareholders and growth projects? The answer is relatively ambiguous, but does offer contain some even-handed advice. Companies will need to “prioritise effectively their cash commitments, but also continuously improve their cost structures to cushion themselves from adverse price movements and anticipated extra expenditure.”

### Social licence to operate (SLTO)

Mining companies have spent the past decade investing millions in sustainability and community initiatives to garner a ‘social licence to operate’ in their strategic locations. But 2018 will require operators to change the way in which they go about achieving a social licence to operate. Rather than the reactive and compensatory approach that has characterised the industry to date, operators are encouraged to take a strategic and collaborative approach instead. In other words, companies shouldn't be investing in community initiatives as an afterthought, but should be proactively engaging with communities to achieve buy-in well-ahead of proposed project kick-offs. After all, environmental accidents, employee strikes and worker fatalities result in collateral damage for the industry's

# Challenges facing mining businesses and possible solutions

reputation as a whole- something which can't be ameliorated via compensatory actions.

## Resource replacement

When the commodities markets crashed, one of the first areas of expenditure to be curtailed in a big way was exploration. Unfortunately, capex on exploration has not yet been replaced despite the recovery of commodity values. Therefore, a key challenge facing mining businesses in 2018 will be finding the capital to invest in exploration activity. Other potential solutions include the creation of partnerships as a means of expanding resource bases and investing in new technologies and software applications to achieve higher exploration success rates.

## Access to and optimisation of energy

Mining operations have traditionally been very energy hungry; and it's unlikely that this situation is going to change any time soon. With the cost of energy increasing for many mining operators, the effective optimisation of energy could reap significant cost savings. 2018 could be the year in which remote mining sites compliment their traditional diesel power sources with renewable sources and microgrids to improve access to, and optimisation of, power. Aluminium and Copper producers are mentioned in the EY report as being particularly innovative when it comes to power sources. 'Aluminium and Copper producers are highlighting their use of solar and hydro

energy to both maintain their reputation as a 'green' metal but also to obtain a premium with industrial customers wishing to reduce their carbon footprint."

## Managing Joint Ventures (JVs)

Joint Ventures (JVs) are widely utilised across the mining industry as they can deliver a plethora of business benefits such as capital intensity, risk mitigation, supply chain optimisation and much else besides. However, if JVs 'go bad' then the fallout can be extremely disruptive to projects. According to EY's report, JV partners should ensure that they have mitigation strategies in place to protect their investments, assets and projects throughout 2018.



CureChem Overseas (Pty) Ltd  
1 Robert Drive Msasa  
Msasa, Harare, Zimbabwe

## Leading Supplier of Mining Chemicals

- Activated Carbon
- Sodium Cyanide
- Acetylene Carbon Black
- Sodium Metabisulphite (Smbs)
- Borax (Anhydrous)
- Flocculants
- Caustic Soda Flakes.
- Hydrated Lime
- Lead Nitrate.
- Sulfuric Acid 98%
- Mercury
- Caustic Soda Pearls (Naoh)
- Mill Balls
- Copper Sulphate Pentahydrate
- Xanthates
- Hydrogen Peroxide 50%
- Hydrochloric Acid
- Nitric Acid 68%
- Sodium Silicates (Used In Platinum Mines As Coagulant)

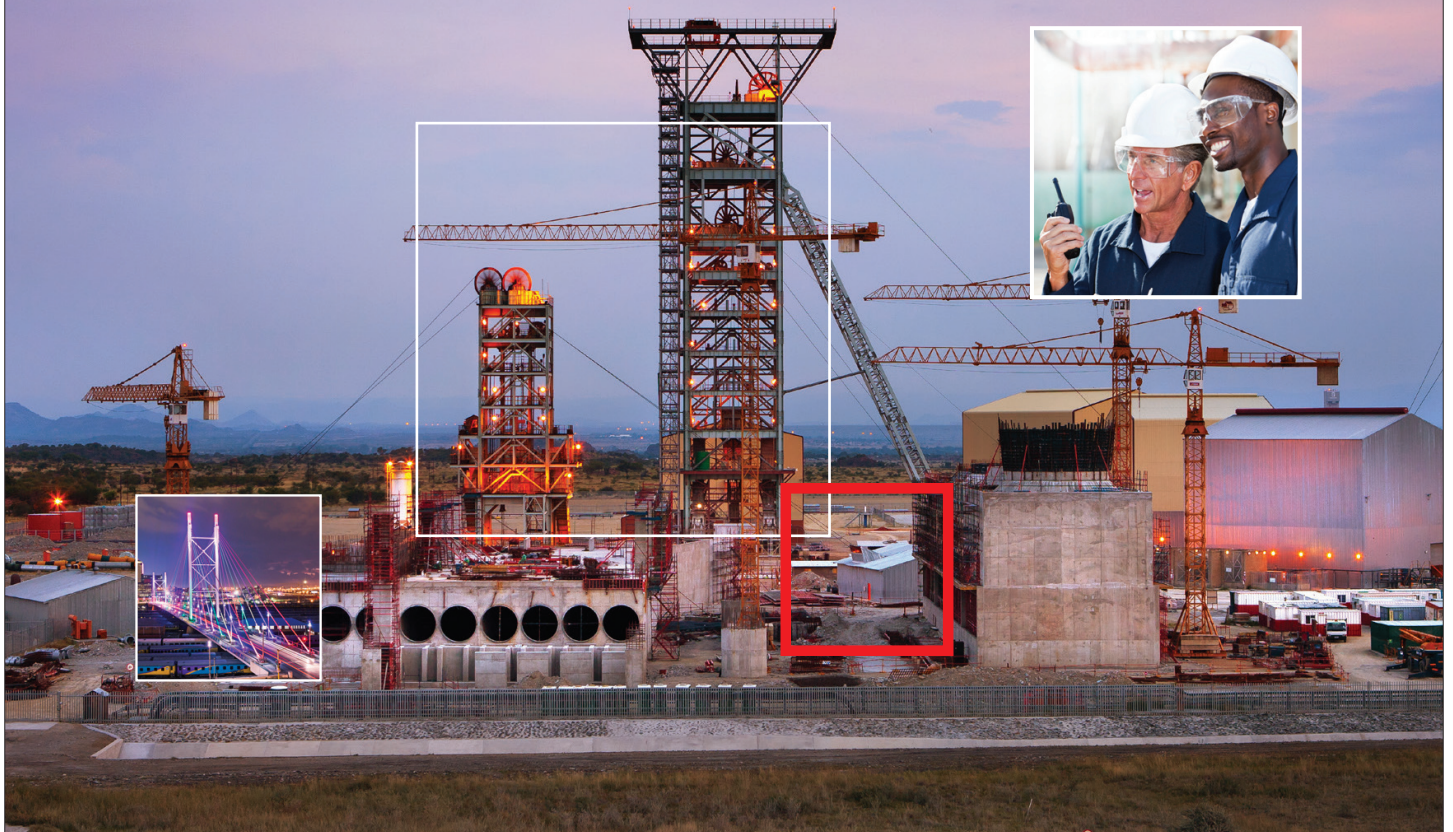
HEAD OFFICE  
1 Robert Drive Msasa  
Msasa, Harare, Zimbabwe  
Tel: (263-4) 490500, 480210  
Fax: (263-4) 486817

Bulawayo Branch  
5 Wallasey road  
Donnington, Bulawayo  
Tel: (263-9) 08644101333  
Email: techmanager.ccopl@curechem.com

Branches in Kwekwe, Gweru,  
Kadoma, Gwanda

Email: [miningsales.ccopl@curechem.com](mailto:miningsales.ccopl@curechem.com) | [www.curechem.com](http://www.curechem.com)

# Realising possibilities from mine to market.



Resource  
Evaluation



Mine  
Planning



Mining & Mine  
Development



Materials  
Handling



Mineral  
Processing



Tailings & Waste  
Management



Smelting  
& Refining



Transport  
to Market



Environment  
& Approvals



Non-Process  
Infrastructure

WorleyParsons provides innovative solutions for each step of the mining value chain. We combine world-leading, concept-to-completion expertise with design and major project delivery capabilities for the minerals and metals sector, from bulk commodities to rare earths, with complete mine-to-market solutions from inception to rehabilitation. Our Global Centre of Excellence for Mining and Minerals in South Africa has niche expertise in hard rock and precious minerals and metals, and we have achieved particular recognition for the delivery of complex processing plants and deep shaft mines.



## WorleyParsons

resources & energy

[worleyparsons.com](http://worleyparsons.com)

[wprsainfo@worleyparsons.com](mailto:wprsainfo@worleyparsons.com)

# All Minerals and location found in Zimbabwe

Agate	Nyamandhlovu, Chikomba, Lupane
Aluminum	Mutare, Nyanga, Mwenezi
Amazonite	Nyamandhlovu, Rushinga
Amethyst	Nyamandhlovu, Hurungwe, Hwange, Makonde, Lupan
Antimony	Kwekwe, Bubi, Mberengwa, Kadoma, Shurugwi
Arsenic	Bubi, Shurugwi, Mutare, Gwanda
Asbestos	Masvingo, Gwanda, Matobo, Mberengwa, Insiza, Makonde, Umzingwane
Aventurine	Masvingo, Beitbridge
Barites	Kwekwe, Mwenezi
Beryl	Hurungwe, Kariba, Goromonzi, Harare, Mudzi, Rushinga, Mutoko, Bindura, Marondera, Gutu, Buhera, Bikita, Chegutu, Hwange, Mberengwa, Gweru
Bismuth	Gwanda, Insiza, Goromonzi, Hwange
Cesium	Mudzi, Bikita, Goromonzi
Calcite	Hwange, Bindura, Chiredzi, Mwenezi
Chromium	Mberengwa, Guruve, Makonde, Gweru, Kwekwe, Shurugwi, Chegutu, Kadoma, Gwanda, Insiza, Masvingo, Chirumanzu
Citrine	Marondera, Harare, Goromonzi
Clay	Harare, Bulawayo, Gwanda, Gweru
Coal	Gokwe, Chiredzi, Beitbridge, Mwenezi, Hwange, Lupane, Binga, Kariba, Hurungwe, Bikita
Cobalt	Kwekwe, Insiza, Shamva, Bubi, Bindura
Copper	Makonde, Kadoma, Mutare, Chirumanzu, Chegutu, Kwekwe, Shurugwi, Beitbridge, Gokwe, Bindura, Chipinge, Bikita, Insiza, Makonde, Harare, Bulawayo, Shamva, Chiredzi, Nkayi, Mudzi, Chegutu, Bindura, Kwekwe, Hurungwe, Bubi, Makonde, Bikita, Gwanda, Masvingo.
Cordierite	Hurungwe, Beitbridge, Chimanimani, Rushinga, Makuti
Corundum	Beitbridge, Chiredzi, Shurugwi, Marondera, Mberengwa, Mazowe, Rushinga, Insiza, Goromonzi, Wedza, Makoni
Diamond	Gweru, Bubi, Beitbridge, Binga, Mwenezi, Mutare, Chivi
Diatomite	Hurungwe
Dolomite	Mutare, Beitbridge, Makonde, Mudzi, Masvingo, Rushinga.
Emerald	Gutu, Masvingo, Insiza, Mberengwa, Hurungwe.
Feldspar	Harare, Bikita, Umzingwane, Goromonzi
Fireclay	Hwange, Chiredzi, Kwekwe, Lupane, Nkayi, Kadoma, Kwekwe
Flint clay	Mwenezi, Beitbridge
Fluorite	Hwange, Guruve, Binga
Garnet	Beitbridge, Hurungwe, Mudzi, Guruve, Rushinga, Marondera
Graphite	Hwange, Hurungwe, Kariba, Makonde
Gypsum	Beitbridge
Gold	Every district in Zimbabwe
Iron	Kwekwe, Mberengwa, Harare, Kwekwe, Buhera, Gweru, Charter, Chiredzi, Masvingo, Mazowe, Kadoma.

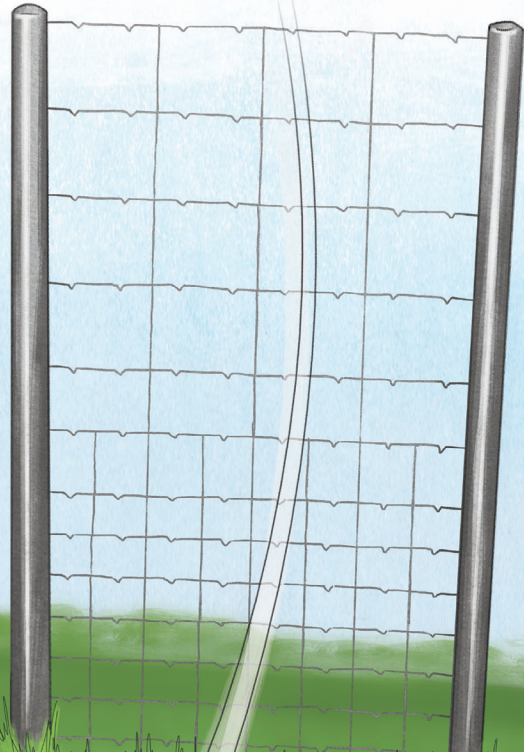
# All Minerals and location found in Zimbabwe

Jade	Masvingo
Kaolin	Kwekwe, Mutare, Bubi, Hwange, Kadoma, Mazowe, Harare, Umzingwane, Nkayi, Chegutu
Kainite	Hurungwe, Nyanga, Mudzi, Rushinga
Lead	Mberengwa, Kwekwe, Gokwe, Mutare, Wedza, Hwange
Limestone	Mberengwa, Gwanda, Bindura, Shamva, Mazowe, Kadoma, Umzingwane, Gweru, Chegutu, Chimanimani, Mudzi, Harare, Hurungwe
Lithium	Goromonzi, Mudzi, Buhera, Bikita, Chegutu, Hwange, Harare, Insiza, Rushinga, Mutoko, Mutare, Hwange
Magnetite	Gwanda, Nyanga, Kadoma, Mwenezi, Insiza, Buhera, Mberengwa, Beitbridge, Gweru
Manganese	Kwekwe, Gweru, Makonde, Mberengwa
Mercury	Bubi, Kadoma
Mica	Hurungwe, Rushinga, Kariba, Hwange
Molybdenum	Kwekwe, Insiza, Shurugwi, Makonde, Chipinge, Gweru, Mutare
Mtorolite	Guruve, Mutare
Nickel	Bubi, Makonde, Kwekwe, Insiza, Guruve, Shamva, Shurugwi, Matobo, Chegutu, Bindura, Gweru.
Ochre	Gweru, Kwekwe
Palladium	Kwekwe, Makonde, Shurugwi, Chegutu
Phosphate	Buhera
Platinum	Kwekwe, Makonde, Shurugwi, Chegutu, Centenary
Pyrite	Shurugwi, Gwanda, Mazowe, Kadoma, Bulilimamangwe, Shamva, Hwange.
Salt	Mwenezi
Sapphire	Mudzi
Selenium	Makonde
Silica	Gweru, Kwekwe, Makonde, Chegutu, Gokwe, Harare, Goromonzi
Sillimanite	Hurungwe
Silver	Makoni, Makonde, Kwekwe
Talc	Bubi, Guruve, Insiza, Nyanga, Mutare, Mt Darwin, Mberengwa, Goromonzi, Mutoko, Wedza, Kwekwe, Makoni
Tantalum	Hurungwe, Guruve, Kariba, Mudzi, Mutoko, Shamva, Bindura, Harare, Goromonzi, Murehwa, Mt Darwin, Rushinga, Mazowe, Marondera, Gutu, Masvingo, Buhera, Bikita, Mutare, Hwange, Chivhu, Mberengwa, Chimanimani, Makoni, Insiza
Tin	Hurungwe, Mudzi, Shamva, Bindura, Goromonzi, Harare, Rushinga, Mt Darwin, Nyanga, Gutu, Bikita, Hwange, Masvingo, Mutare
Topaz	Hurungwe, Gweru, Mutare
Tungsten	Hurungwe, Kariba, Shamva, Mazowe, Rushinga, Bindura, Guruve, Mt Darwin, Harare, Mudzi, Goromonzi, Bulawayo, Insiza, Matobo, Gwanda, Umzingwane, Bubi, Buhera, Mberengwa, Kadoma, Bikita, Shurugwi, Mutare, Chipinge, Chegutu, Kwekwe, Chiredzi, Wedza, Gweru, Hwange, Masvingo, Makoni
Vanadium	Mt Darwin, Guruve, Bulawayo
Vermiculite	Buhera, Mudzi
Zinc	Kwekwe, Gokwe, Nyanga

# Bonnox

(PTY) LTD  
Fencing Manufacturers

With us you score  
between the posts  
and convert with  
a **golden boot**



HINGEJOINT®



RINGLOK®



PREVENT POOR IMITATIONS AND BUY DIRECTLY FROM THE ONLY BONNOX  
FACTORY, SITUATED IN SUNDERLAND RIDGE, CENTURION  
**ONLY A BONNOX INVOICE WILL SERVE AS A CERTIFICATE OF AUTHENTICITY.**

zane@bonnox.co.za ▪ gerda@bonnox.co.za ▪ linda@bonnox.co.za

**www.bonnox.co.za ▪ 012 666 8717**



ISSUE 04 | OCTOBER 2018

# MINING

ZIMBABWE

**Proplastics**  
Pipe Systems That Last

Civils | Mining | Irrigation | Casings | Ducting

SABS 150 YEARS SABS 150 YEARS SABS 150 YEARS SAPPMA

At 150 years, the tortoise generally has one of the longest lifespans. At Proplastics we are inspired to manufacture products that stand the test of time, our products are dependable and reliable for generations with over 50 years of performance guaranteed.

**Invest in Pipe Systems That Last**

For more info call us on  
Head Office & Works: No. 5 Spurn Rd, Ardbernie Harare.  
T: 0242-626564-5, 0773 888 923 / 0773 894 561  
Harare Show Grounds Shop  
T: 094420155, 0442 751 735  
Bulawayo Branch Millery Rd (off Khumi Rd), P.O. BOX 81115, B.  
T: +263 029 68396, 62059  
E: sales@proplastics.co.zw

[www.proplastics.co.zw](http://www.proplastics.co.zw)

ISSUE 04 | OCTOBER 2018

# MINING

ZIMBABWE

**Proplastics**  
Pipe Systems That Last

Civils | Mining | Irrigation | Casings | Ducting

SABS 150 YEARS SABS 150 YEARS SABS 150 YEARS SAPPMA VEGA

At 150 years, the tortoise generally has one of the longest lifespans. At Proplastics we are inspired to manufacture products that stand the test of time, our products are dependable and reliable for generations with over 50 years of performance guaranteed.

**Invest in Pipe Systems That Last**

For more info call us on  
Head Office & Works: No. 5 Spurn Rd, Ardbernie Harare.  
T: 0242- 626564-5, 0773 888 923 / 0773 894 561  
Harare Show Grounds Shop  
T: 094420155, 0442 751 735  
Bulawayo Branch Millery Rd (off Khumi Rd), P.O. BOX 81115, B.  
T: +263 029 68396, 62059  
E: sales@proplastics.co.zw

[www.proplastics.co.zw](http://www.proplastics.co.zw)

**Advertise with us**  
**Call us and speak to a consultant**

Mining Zimbabwe - a provider of valuable intelligence to the Mining Community and a platform for business transaction

# BOLT GAS<sup>®</sup>

## FROM MINING TO LOGISTICS AND EVERYTHING IN-BETWEEN



We are the leading supplier of parts, machinery and spares for the mining, logistics and manufacturing industries. Our experience in filtration, hydraulics, ground support, air purification and extraction is unmatched in the industry. That is why we are trusted to be the accredited suppliers of IHP, Donaldson, Gates and Minova products and services.

**So when you need quality genuine spares and equipment, talk to us today. We have the capacity to make any project a success.**

**BOLT GAS<sup>®</sup>**  
INTERNATIONAL

📍 58A Steven Drive,  
Beverly West,  
Msasa Industrial  
Harare, Zimbabwe  
☎ +263 4 487113/4,  
+263 4 447765/66

**BOLT GAS<sup>®</sup>**  
ENGINEERING

📍 105 Railway Avenue  
Zvishavane, Zimbabwe  
☎ +263 51 3744  
+263 772 147 459

Authorized Agent & Distributor Of

