



TECHVisit

FREDA REBECCA GOLD MINE TECHNICAL VISIT | Q3 | 06/09/2024

FREDA AND SHAMVA
Contribute Nearly 10% of
Zim's Total Gold Output

Freda Invests

US\$15 Million
to Expand TSF

WHY

Serious Mining Suppliers & Service
providers can't afford to miss
TECHNICAL VISITS!

Freda Rebecca

Showcases its Hybrid Mining Operation



Mining

Z I M B A B W E

ADVERTISE WITH



The Provider of valuable intelligence to the Zimbabwe Mining Industry


Over 3 million impressions monthly


 93 000


 63 000

 4 300

 1 800

 4th Floor Fidelity Life Towers
5 Raleigh street
Harare CBD
Zimbabwe

 www.miningzimbabwe.com
info@miningzimbabwe.com

 Editorials: +263 772 701 730
Advertising: 263 775 523 000



THE ASSOCIATION
OF MINE MANAGERS
ZIMBABWE

IN COLLABORATION WITH

THE ZIMBABWE
CHAMBER OF MINES



PRESENTS

THE 2024 ANNUAL CONFERENCE & AGM

THEME

"Smart Mining: Integrating Technology
for Enhanced Safety, Productivity, and
Sustainability"

VENUE Holiday Inn, Bulawayo

DATE 21-24 November 2024

Program

Day 1

1. Technical Visit at Blanket Mine
2. Registration at Holiday Inn
3. AMMZ SHE Awards – Evening Cocktail

Day 3

1. Golf at BCC
2. Evening dinner at BCC

Day 2

1. The conference and presentations
2. AMMZ AGM – closed door
3. The President's dinner.

Register for the 52nd Annual General Meeting and Conference and join a community which connects you with mining professionals and Mine Managers in Zimbabwe.

Don't be left out!

REGISTRATION & BOOKINGS

To register, contact us on

Email: events@chamines.co.zw

Mobile: 0774 604 262 (Thembi)

0772 639 875 (Nyasha)

or simply scan
the QR Code



SCAN HERE

www.ammz.co.zw

CONTENT

ISSUE 01



◀ **04** View Point
An Observation



08 ▶
Freda Showcases its Hybrid
Mining Operation



◀ **15** Freda Invests US\$15
Million to Expand TSF

06 ↑
AMMZ PRESIDENT Praises Unique Dual-
Method Operations and Sustainable
Practices

UNDERGROUND **21** ▶



◀ **23** Freda and Shamva
Contribute Nearly 10%
of Zimbabwe's Total
Gold Output

Editor - Reflections on the Freda Rebecca Gold Mine Technical Visit



Keith Sungiso

The technical visit to Bindura located **Freda Rebecca Gold Mine**, hosted by the Association of Mine Managers of Zimbabwe (AMMZ), proved to be one of the most enlightening experiences for everyone who attended. As one of Zimbabwe's largest gold mines, Freda Rebecca showcased not only its operational capacity but also its commitment to continuous improvement and top-notch technical innovation.

Attendees, mainly Mine Managers and industry professionals, got an opportunity of an in-depth look at the mine's hybrid operation (conducting both underground and open-pit operations) which together account for up to 70% of its gold production. Senior plant metallurgist Tinashe Chikomo detailed the mine's strategic enhancements aimed at increasing recovery rates, from reconfiguring its agitation systems to investing in a 10-tonne-per-day oxygen plant for the

Carbon-in-Leach (CIL) circuit. These technical innovations underscored the mine's mission to boost productivity and profitability by improving the efficiency of gold extraction from low-grade ore.

The visit was particularly beneficial to all in attendance who gained firsthand knowledge of Freda Rebecca's approach to tackling the common mining industry challenges such as declining recovery rates and operational efficiency. Participants had the opportunity to observe the interplay between theoretical metallurgical practices and their real-world application in a large-scale mining environment. Moreover, the open exchange of ideas and experiences between Mine Managers fostered a collaborative atmosphere that will no doubt contribute to the broader advancement of Zimbabwe's mining sector.

For those who missed this magnificently insightful visit, I encourage you to participate in future technical tours.

Companies can greatly benefit from these sessions as they provide a platform for learning, innovation exchange, and networking. As a service provider, one will know how their product is fairing in the market and if there are suggestions for improvements. The importance of staying abreast of evolving industry practices, especially in a sector as dynamic as mining, cannot be overstated. Let's continue to build a community of excellence by sharing knowledge and advancing best practices across our mining operations.

Together, we can strengthen Zimbabwe's mining industry and pave the way for even greater achievements.

ABOUT PUBLICATION

Published by

Timelison Media
4th floor Fidelity Life Towers
Raleigh street
Harare CBD

Tel: +263 772 701 730

Writers | Journalists

Editor
Keith Sungiso

Journalists
Rudairo Mapuranga
Ryan Chigoche

Copyright disclaimer

All content published in this magazine, including articles, images, and graphics, is the intellectual property of the respective authors and the magazine. Unauthorized reproduction, distribution, or use of any content without prior written consent is strictly prohibited. All rights reserved. For permissions or reprints, please contact the editorial team.

AMMZ PRESIDENT

Praises Unique Dual-Method Operations and Sustainable Practices

Reflecting on the Association of Mine Managers of Zimbabwe (AMMZ)'s recent technical visit to Freda Rebecca Mine, AMMZ President Abel Makura expressed his satisfaction with the collaborative exchange and the insights gained.

The visit, an integral part of the Association's mission to enhance industry knowledge, offered members the opportunity to observe diverse mining methods and share expertise. Makura lauded the leadership and operational excellence at Freda Rebecca Mine, emphasizing the value of such exchanges.

Led by Mine Manager Dr Alfred Chinyere, the Freda Rebecca team showcased the mine's dual-method approach, highlighting both open-cast and underground operations.

Commenting on the visit AMMZ President appreciated the interaction, further commending the unique opportunity to see a mine employing two different mining methods.

"Today, we are at Freda Rebecca Mine in Bindura with the Association of Mine Managers of Zimbabwe. We have been on a technical visit, which is part of our association's culture, where members visit each other's operations to learn and share knowledge. We are pleased to be here," said AMMZ President Abel Makura.

"We would like to thank Freda Rebecca's leadership, led by Dr. Alfred Chinyere, who is both the Mine Manager and a member of the Council of the Association of Mine Managers of Zimbabwe," Makura added.



Eng Abel Makura



Makura further expressed his appreciation for the broader discussions held during the visit, noting, "The broader discussions we had were very fruitful, and we appreciated the interaction. It was a unique experience to see a mine employing two different mining methods: an open-cast setup and an underground operation. We were particularly impressed with the activities underground, the high standards of housekeeping, and the minimalist approach that has

streamlined many of the key operations in the mine."

He concluded by commending the mine's safety and sustainability standards: "The production was safe, sustainable, and well-managed. We would like to thank Kuvimba for allowing us the opportunity to be here, and we are very happy to have been part of this visit."



Eng Abel Makura

Freda Showcases its Hybrid Mining Operation



Dr Alfred Chinyere

Dr. Alfred Chinyere, Mine Manager of Freda Rebecca Mine, emphasized the importance of the day for the Association of Mine Managers of Zimbabwe. In his statement, he highlighted the significance of showcasing Freda Rebecca's operations and the role the mine plays within the industry.

"Today is one of the most important days in the Association of Mine Managers of Zimbabwe's calendar. The focus of the day was to showcase what Freda Rebecca Mine is all about what we do, the type of mining we engage in, the technologies we deploy, and our production trends," said Dr. Chinyere.

He underscored the importance of the event as a learning platform for industry colleagues.

"This sharing platform allows colleagues from across the mining industry to learn from us, while also offering valuable ideas on how we can improve our production."

During the visit, attendees were taken on a comprehensive tour of the mine's operations. Visitors had the rare opportunity to go underground and visit the open-pit section of the mine. Freda Rebecca Mine, which operates both open-pit and

underground mining, provided an immersive experience for participants.

In addition, Dr Chinyere noted that some team members were able to visit the processing plant and witness the smelting process, an experience that many in the industry do not often have the chance to see.

The event also drew the participation of various companies that support the mining industry. According to Dr. Chinyere, the event provided an opportunity for these companies to observe operations and showcase their products. This exchange, he noted, is crucial for ensuring ongoing, efficient support to Freda Rebecca Mine's activities.

"We needed to showcase their products so that they continue to support us efficiently and effectively," he added.

The event stands as a significant moment for fostering collaboration and growth within Zimbabwe's mining sector, as well as a demonstration of Freda Rebecca Mine's contributions to industry advancements.

"This sharing platform allows colleagues from across the mining industry to learn from us, while also offering valuable ideas on how we can improve our production."
- Dr Chinyere



Freda Rebecca Gold Mine in Exploration Works to Extend Mine Life Beyond 5 Years



Freda Rebecca Gold Mine, owned by Kuvimba Mining, is actively pursuing exploration initiatives to extend its operational life beyond the current five-year projection.

By Ryan Chigoche

This update was presented during the recent Association of Mine Managers Zimbabwe (AMMZ) technical visit to the mine on Friday.

Currently, the FRGM ore body has a strike length of approximately 1.5 kilometres. The strike width varies between 15 to 30 meters, depending on the shear zone. The Freda shear, in particular, is slightly discontinuous compared to the Rebecca shear.

The mine's resource estimate includes measured, indicated, and inferred resources. Underground resources are reported at approximately 5 million tonnes, with a grade of 2.09 grams per

tonne, equating to 347,000 ounces of gold. When including surface resources, the total rises to 8 million tonnes of ore at a grade of 1.99 grams per tonne, yielding 520,000 ounces of gold. Overall, indicated resources total 16 million tonnes at 1.89 grams per tonne, with 989,000 ounces of gold, and a conversion rate of 63%.

Speaking at the AMMZ technical visit, Kudzai Takaendesa, Senior Production Geologist at FRGM, said that the current resources give the mine only five years of life. She revealed the ongoing exploration works:

"This total resource gives us a life of mine of approximately five years; however, there is ongoing exploration work being carried out near the mine." Takaendesa revealed that exploration works, including the Alice, Topsman, and Savoy projects, are ongoing. "The exploration involves IP and geophysics work," she said.



Meanwhile, Freda Rebecca Gold Mine has refined its mining operations, utilizing both underground and open-pit techniques to maximize efficiency and safety.

In the underground sections, the mine uses the sub-level open-stopping mining method. Ore bodies are accessed through five-by-five-meter development tunnels and dump trucks transport ore from these tunnels to the surface. Data mining software optimizes extraction processes, targeting a grade of 1.3 grams per tonne.

The underground operation includes long-haul drilling rigs with a maximum depth of 85 meters. The ventilation system has been adapted to meet increased demands, using a single vent shaft capable of delivering 280 cubic meters of air per second. Safety measures, including roof boards and fog lights, are employed to manage risks associated with groundfalls.

Freda Mine Lashing and Hauling Operations: Streamlining Efficiency

Freda Mine has refined its lashing and hauling operations to enhance efficiency and safety in its underground processes. The mine's approach integrates both manual and remote-controlled systems to address various operational challenges

effectively.

Central to Freda Mine's haulage system is the 7-cube, 14-tonne Load Haul Dump Unit (LHTU). This equipment works in tandem with a mix of articulated Kett and labor trucks, as well as rigid Wool trucks, managing a total truck capacity of 130 tonnes. The efficient dispatch process typically requires only two to three scoops to fill a truck, ensuring a streamlined flow of material from the draw points to the surface.

Ngonidzashe Nyandoro, Mine Captain for loading, hauling, and the crushing plant, addressed the AMMZ delegates about the mine's operations. He explained that the mine employs a dual approach depending on the location within the stock. In more accessible areas, manual lashing is preferred for its speed and simplicity. In deeper or more restricted areas, a remote-controlled lashing system is used to overcome accessibility issues.

This combination of methods allows Freda Mine to maintain high operational standards. However, a significant challenge is the limitation of line-of-sight for the remote-controlled system, which operates effectively within a 50-meter range. According to Nyandoro, this constraint occasionally impacts the efficiency of the lashing process.





A typical shift in this department involves the movement of 4,000 to 4,500 tonnes of ore.

Freda Mine's lashing and hauling operations reflect a commitment to optimizing both safety and productivity, setting a benchmark for efficiency in the mining industry.

In addition to underground mining, Freda Rebecca Gold Mine is expanding its open-pit operations. The current project aims to merge the Freda and Rebecca pits into a single, larger super pit. Data mining software has optimized planning for this expansion, with a target cutoff grade of 0.7 grams per tonne and a planned grade of 1.2 grams per tonne. The open-pit

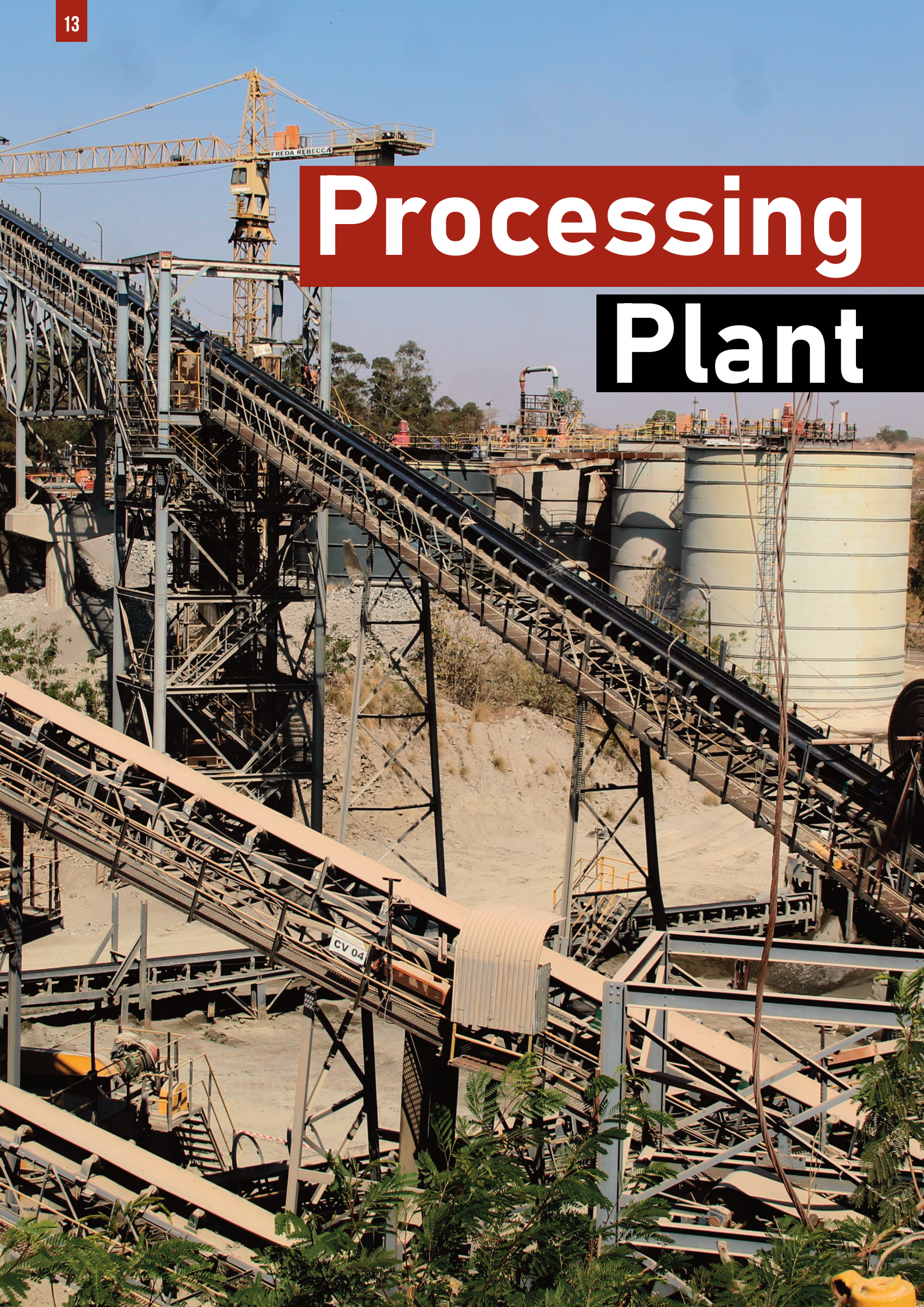
design includes 10-meter benches and robust haul roads to accommodate large mining trucks.

The open-pit operation is managed by contractor Davis, with a target output of 60,000 tonnes of ore and an overall stripping ratio designed to produce over 300,000 tonnes of ore and waste. The process follows a cycle of drilling, blasting, loading, and crushing.

Both underground and open-pit operations reflect Freda Rebecca Gold Mine's commitment to integrating advanced technologies and safety protocols to enhance productivity and ensure effective resource extraction.



Processing Plant



Rebecca Portal



Welcome to...
**REBECCA
PORTAL**

PRIMARY BLASTING
08 - 16:30 HRS - 17:30 HRS
16:30 HRS - 18:00 HRS
17:30 HRS - 18:00 HRS
NO PERSON IS ALLOWED TO GO
INTO THE WIND BEFORE THE LIFT
IS FULLY SECURED

Freda Invests US\$15 Million to Expand TSF



Kuvimba Mining House (KMH)-owned Freda Rebecca Gold Mine has invested nearly US\$15 million to develop a new tailings storage facility (TSF) as the current one nears the end of its lifespan, Mining Zimbabwe can report.

By Rudairo Mapuranga

Speaking to Mining Zimbabwe on the sidelines of the Association of Mine Managers of Zimbabwe (AMMZ) 2024 third-quarter technical visit, held at Freda Rebecca Gold Mine, General Manager Dr. Alfred Chinyere revealed that the current TSF has reached capacity due to the increased tailings generated from processing ore from Shamva.

Dr Chinyere explained that to address this, the mine plans to expand the existing facility to cover a footprint of 64 hectares, designed to accommodate both Freda Rebecca's production and the additional output from Shamva.

"The current tailings storage facility we are operating has nearly reached the end of its lifespan. The rate of rise has increased significantly due to the introduction of Shamva and the overall increase in production. We plan to expand the existing facility over a footprint of 64 hectares. The expanded facility is designed to accommodate Freda's production and whatever Shamva is contributing," said Dr. Chinyere.

The development of the new TSF is a critical project for Freda Rebecca, particularly given the significant role the mine plays in Kuvimba's gold production portfolio. Tailings storage is a crucial aspect of mining operations, ensuring that waste materials are managed safely and efficiently. Failure to address this need could potentially hinder production and pose environmental risks, underscoring the importance of the US\$15 million investment.



Dr Chinyere further added that the TSF expansion is expected to be commissioned in January next year, aligning the project with the mine's strategic objectives.

"The process involves us investing around US\$15 million, which will be used to procure various equipment, including lining and piping. We are also allocating funds to pay the contractor, who is already on-site. We expect that by January next year, the new tailings facility will be commissioned, ensuring that by the full-blown rainy season, the current tailings facility will not be strained. That's the main focus of our tailings facility project at present," Dr. Chinyere said.

He assured stakeholders that Freda Rebecca's current TSF would still be able to manage the mine's output for the time being, even as production scales up due to Shamva's contributions.

"The current tailings facility will still be able to accommodate the output because, on a monthly basis, we generate roughly 200,000 to 230,000 tonnes of milled material, of which 45,000 to 50,000 tonnes come from Shamva. So, during this period,

we still have the capacity to deposit material in the current tailings facility, but we are managing it with a lot of controls," he said.

Dr Chinyere highlighted that advanced technology is being employed to ensure the safe management of the facility during this transitional phase.

"We have installed sophisticated equipment to provide real-time monitoring of our tailings facility, including vibrating piezometers. These help us track the behaviour of the facility, such as its moisture content, rate of rise, freeboard, and other critical parameters. We believe this will allow us to manage the facility effectively during this period," he said.

The investment in the TSF signals Freda Rebecca's commitment to sustainability and operational efficiency, ensuring that the mine remains compliant with environmental regulations while maintaining production levels. This development also highlights the broader efforts of Kuvimba Mining House to strengthen its portfolio and sustain long-term growth in Zimbabwe's gold mining industry.



Dr Alfred Chinyere

Freda Rebecca Considering 30MW Solar Plant to Augment Power Bottlenecks



Kuvimba Mining House (KMH)-owned Freda Rebecca Gold Mine has invested nearly US\$15 million to develop a new tailings storage facility (TSF) as the current one nears the end of its lifespan, Mining Zimbabwe can report.

By Rudairo Mapuranga

Speaking to Mining Zimbabwe on the sidelines of the Association of Mine Managers of Zimbabwe (AMMZ) 2024 third-quarter technical visit, held at Freda Rebecca Gold Mine, General Manager Dr. Alfred Chinyere revealed that the current TSF has reached capacity due to the increased tailings generated from processing ore from Shamva.

Dr Chinyere explained that to address this, the mine plans to expand the existing facility to cover a footprint of 64 hectares, designed to accommodate both Freda Rebecca's production and the additional output from Shamva.

"The current tailings storage facility we are operating has nearly reached the end of its lifespan. The rate of rise has increased significantly due to the introduction of Shamva and

the overall increase in production. We plan to expand the existing facility over a footprint of 64 hectares. The expanded facility is designed to accommodate Freda's production and whatever Shamva is contributing," said Dr. Chinyere.

The development of the new TSF is a critical project for Freda Rebecca, particularly given the significant role the mine plays in Kuvimba's gold production portfolio. Tailings storage is a crucial aspect of mining operations, ensuring that waste materials are managed safely and efficiently. Failure to address this need could potentially hinder production and pose environmental risks, underscoring the importance of the US\$15 million investment.

Dr Chinyere further added that the TSF expansion is expected to be commissioned in January next year, aligning the project with the mine's strategic objectives.

Continued on the next page >>

"The process involves us investing around US\$15 million, which will be used to procure various equipment, including lining and piping. We are also allocating funds to pay the contractor, who is already on-site. We expect that by January next year, the new tailings facility will be commissioned, ensuring that by the full-blown rainy season, the current tailings facility will not be strained. That's the main focus of our tailings facility project at present," Dr. Chinyere said.

He assured stakeholders that Freda Rebecca's current TSF would still be able to manage the mine's output for the time being, even as production scales up due to Shamva's contributions.

"The current tailings facility will still be able to accommodate the output because, on a monthly basis, we generate roughly 200,000 to 230,000 tonnes of milled material, of which 45,000 to 50,000 tonnes come from Shamva. So, during this period, we still have the capacity to deposit material in the current tailings facility, but we are managing it with a lot of controls," he said.

Dr Chinyere highlighted that advanced technology is being employed to ensure the safe management of the facility during this transitional phase.

"We have installed sophisticated equipment to provide real-time monitoring of our tailings facility, including vibrating piezometers. These help us track the behaviour of the facility, such as its moisture content, rate of rise, freeboard, and other critical parameters. We believe this will allow us to manage the facility effectively during this period," he said.

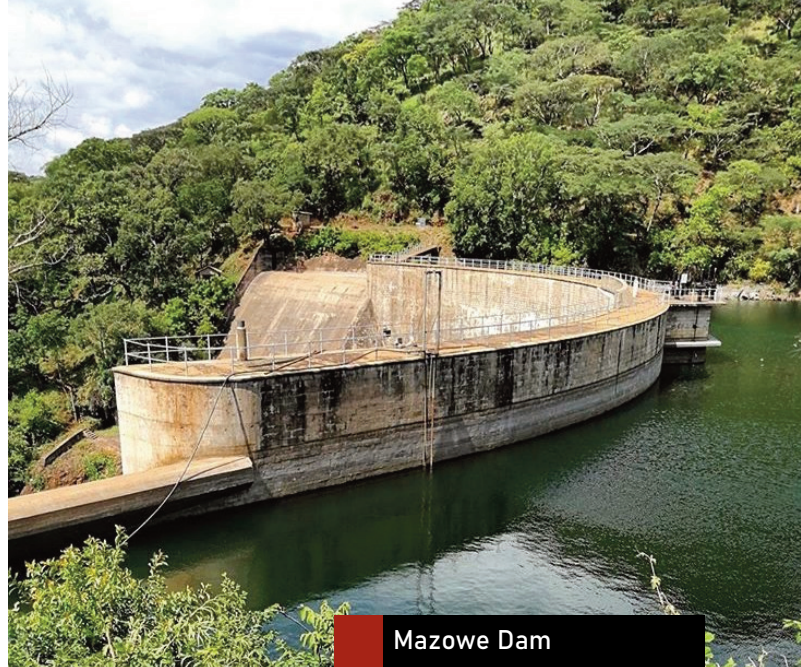
The investment in the TSF signals Freda Rebecca's commitment to sustainability and operational efficiency, ensuring that the mine remains compliant with environmental regulations while maintaining production levels. This development also highlights the broader efforts of Kuvimba Mining House to strengthen its portfolio and sustain long-term growth in Zimbabwe's gold mining industry.



Freda Rebecca Gold Mine Faces Water Supply Crisis Amid El Niño Drought



Dr Alfred Chinyere



Mazowe Dam

One of Zimbabwe's largest gold producers, Freda Rebecca Gold Mine, is facing significant challenges in its processing operations due to the ongoing El Niño-induced drought.

By Rudairo Mapuranga

The mine, which relies heavily on water from the Mazowe River, is struggling to meet its processing water needs as the river's levels have been severely depleted.

During the Association of Mine Managers of Zimbabwe (AMMZ) technical visit to Freda Rebecca last Friday, the mine's Senior Plant Metallurgist, Tinashe Chikomo, highlighted the gravity of the situation.

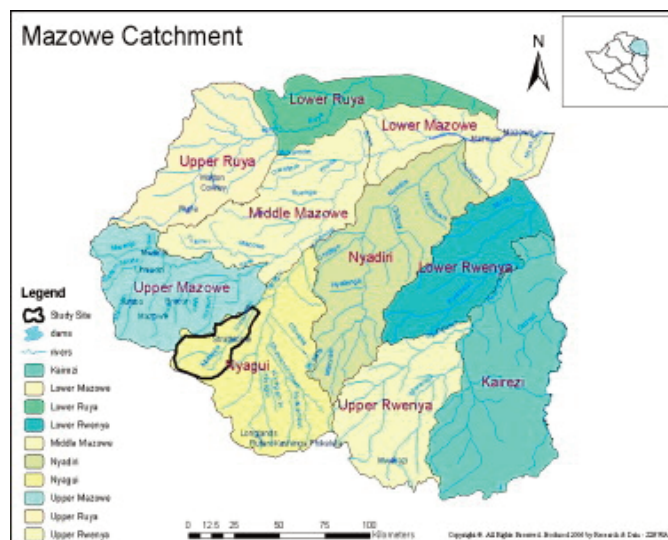
He noted that the mine is currently engaging with local authorities to explore alternative water sources to ensure

continued operations.

"Our daily processing capacity is between 7,500 to 8,000 tonnes, requiring about 15,000 cubic meters of water, 67% of which is recycled water, with the remainder coming from natural sources, primarily the Mazowe River," Chikomo said.

He further elaborated on the mine's water management infrastructure, emphasizing the role of thickeners in maximizing water recovery.

"We have two thickeners, one 25 meters and the other 15 meters in diameter, which help dewater the slurry, achieving a pulp density of about 50% solids before the slurry is sent to the milling circuit. Despite our recycling efforts, we still face a significant challenge in sourcing enough fresh water," Chikomo said.



Continued on the next page >>



According to Chikomo, the depletion of the Mazowe River, a key water source for Freda Rebecca's operations, has put immense pressure on the mine's production capabilities.

"We consume 15,000 cubic meters of process water daily, two-thirds of which is recycled, with the rest sourced from the river. However, the river's capacity is diminishing rapidly due to the current drought conditions," Chikomo said.

Freda Rebecca is actively seeking sustainable solutions, engaging with authorities to locate other potential water sources. The mine has even considered tapping into underground water reservoirs or drawing water from distant

sources, but these options present logistical challenges and potential costs.

The drought is not only affecting Freda Rebecca but also the broader mining industry, which relies on steady water supplies for mineral processing. As climate change continues to impact weather patterns, the issue of water scarcity is likely to become a more persistent challenge for mining companies operating in drought-prone regions. Freda Rebecca's current situation serves as a stark reminder of the vulnerability of mining operations to environmental factors, underscoring the importance of sustainable water management practices.





UNDERGROUND



UNDERGROUND



Freda and Shamva Contribute Nearly 10% of Zimbabwe's Total Gold Output



Visitors with a +12kg gold bar



Rudairo with a gold bar

Kuvimba Mining House (KMH)-owned Freda Rebecca Gold Mine in Bindura, along with Shamva Mine in Shamva, together contribute approximately 9.5% of the total gold deliveries to Fidelity Gold Refinery (FGR), the country's sole operating gold buyer and exporter, Mining Zimbabwe can report.

By Rudairo Mapuranga

Speaking during the Association of Mine Managers of Zimbabwe (AMMZ) third-quarter technical visit held at Freda Rebecca Gold Mine, General Manager Dr. Alfred Chinyere highlighted the significant contribution of the two mines. He noted that in good months, Freda and Shamva collectively produce up to 300 kg of gold, while slower months average around 270 kg. This translates to approximately 3.2 tonnes of gold annually.

"In terms of gold production, Freda produces around 200 kg per month, while Shamva contributes between 70 and 75 kg. On a good month, we achieve around 300 kg, but during slower months, it's about 270 kg. The two operations are integrated, and we process Shamva's ore throughout the year. Overall, at the national level, we contribute about 9.5% of the country's gold output," said Dr. Chinyere.

He also reflected on Freda Rebecca's historical significance in Zimbabwe's gold mining sector, noting that the mine had long been regarded as the country's biggest gold producer. However, Caledonia's expansion at Blanket Mine may have shifted this position.

"A few years ago, Freda Rebecca was considered the largest gold mine in the country. However, with Caledonia's expansion at Blanket Mine, we now refer to ourselves as one of the largest gold producers in Zimbabwe. Currently, Blanket Mine is a strong competitor, but it's hard to say who is leading the race at the moment."

Dr. Chinyere further elaborated on the mine's production capabilities, noting that the company's gold output averages between 70,000 and 75,000 ounces annually.

"When Shamva was reopened and brought under the Kuvimba portfolio, its production was added to Freda's output, which explains some of the production peaks we've seen," he added.

In conclusion, Dr. Chinyere emphasized that despite their significant output, Freda and Shamva remain low-grade operations, with gold grades averaging around 1.5 grams per tonne.

"We are a low-grade mine, with grades hovering around 1.5 grams per tonne," Chinyere said.



Freda in Strategic Move to Enhance Gold Recovery Rates

Freda Rebecca Gold Mine (FRGM), owned by Kuvimba Mining House and commissioned in 1987, is currently on a mission to boost its gold recovery rate through a series of strategic enhancements. These efforts aim to increase profitability by extracting more gold from the same ore, thereby optimizing resource utilization and increasing revenue, Mining Zimbabwe can report.

By Ryan Chigoche

As the plant evolved from its initial setup, it has undergone several expansions to address the challenges posed by declining recovery rates. This journey reflects a combination of technological adaptation and strategic planning aimed at optimizing operational efficiency.

Currently, Freda Rebecca Gold Mine conducts both underground and open-pit mining. The open pit contributes around 30% to 40% of production, while underground mining, which yields a higher-grade ore, accounts for 60% to 70%, depending on the mine blending mix strategy. Overall, FRGM is a

low-grade mine, with an average recovery of 1.5 grams per tonne.

During a recent presentation at the Association of Mine Managers of Zimbabwe (AMMZ) Q3 Technical Visit hosted by FRGM, Tinashe Chikomo, the FRGM senior plant metallurgist, outlined the miner's short- to medium-term plans to increase the gold recovery rate beyond the current 1.5 grams per tonne.

According to Chikomo, Freda is reconfiguring its agitation systems, recognizing the crucial role of agitation speed in gold recovery. By increasing the agitation speed, the plant aims to enhance dissolution rates—a strategy inspired by successful practices observed during a benchmarking visit to Eureka Mine.

Additionally, Freda is embarking on a major overhaul to include a new facility dedicated to ore preparation before cyanidation. This upgrade is expected to improve the processing of complex ore components, leading to more effective recovery.

Continued on the next page >>

“The plant is also set to procure a new 10-tonne-per-day oxygen plant for the Carbon-in-Leach (CIL) circuit. This upgrade is anticipated to enhance production efficiency, given that the CIL circuit is responsible for approximately 40% of Freda's output,” Chikomo added.

In its early efforts to expand gold recovery capacity, Freda initially operated with 14 tanks, consisting of four large 2,000-cubic-meter tanks and ten smaller 600-cubic-meter tanks. In response to the need for improved recovery rates, the plant's first major expansion occurred in September 2016, when a new plant was introduced. This addition increased the plant's throughput from 160 tonnes per hour to 310 tonnes per hour, marking a significant leap. However, the expansion primarily targeted the crushing and milling sections, with minimal enhancements to ancillary equipment downstream, which reduced residence time and impacted overall recovery efficiency.

In April 2022, Freda made another significant improvement by increasing its throughput capacity to 390 tonnes per hour, an enhancement of 8 tonnes per hour. Despite this progress, the plant faced capital constraints that limited the expansion of downstream ancillary equipment. As a result, the current focus is on increasing tankage to improve residence time. Currently, residence time at full capacity is around 27 hours, short of the optimal 35 hours recommended by metallurgical tests. Freda plans to address this gap through a phased investment approach over the next two to three years.

Freda's ongoing efforts to refine its gold recovery process underscore a commitment to continuous improvement and operational excellence. By investing in additional tankage, enhancing agitation systems, and upgrading processing equipment, the plant aims to achieve its desired recovery rates and reinforce its position in the gold mining industry.

As Freda navigates these enhancements, its strategic focus remains clear: optimizing recovery processes to meet evolving industry standards and operational goals. With these advancements, Freda is poised to achieve greater efficiency and sustained success in its gold processing endeavours.









FREDA REBECCA'S “GOLD ROOM”

THIS IS WHERE WE ACID DIGEST GOLD LOADED WIRE WOOL FROM THE ELUTION SECTION, CALCINE “I.E. DRY” THEM AT HIGH TEMPERATURE TO ALLOW SOME PARTIAL OXIDATION OF THE WIRE WOOL. THE CALCINED WIRE WOOL IS THEN MIXED WITH CHEMICAL FLUXES THAT WILL ALLOW THE CHEMICAL REMOVAL OF IMPURITIES WHEN SMELTING AT VERY HIGH TEMPERATURES ABOVE 1200°C TO GIVE SMELT GOLD BULLION WITH A PURITY OF BETWEEN 65 TO 85% GOLD.





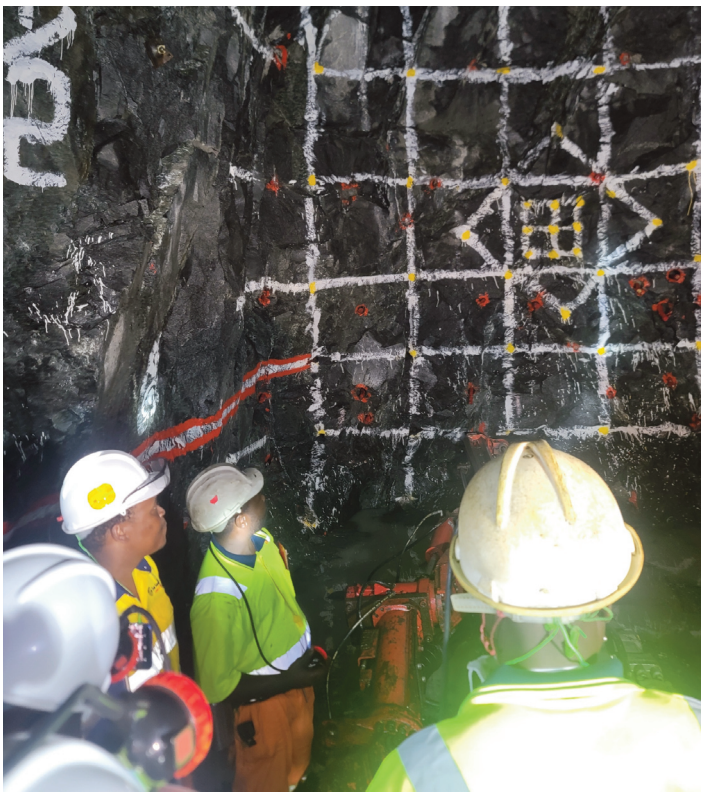
AMMZ FREDA REBECCA TECHNICAL VISIT



AMMZ FREDA REBECCA TECHNICAL VISIT



AMMZ FREDA REBECCA TECHNICAL VISIT



AMMZ FREDA REBECCA TECHNICAL VISIT



The AMMZ

in collaboration with

The Zimbabwe Chamber of Mines



Presents

THE Q4 TECHNICAL VISIT



The event will host a variety of activities, including but not limited to:



Knowledge Sharing

Exchanging information, skills, and expertise with others in the industry.



Tour

Touring of the underground and processing Operations.



Interaction

Interacting and networking with key Stakeholders & so much more!

to



Blanket Mine

RSVP by following the link on our **LinkedIn Page, Facebook, Twitter** and official website.

DATE

21 November 2024

(08:30 - 14:00)

RSVP

Elton +263772570091

Gift +263772570091

Stella +263773132263

www.ammz.co.zw

REGISTRATION TO ATTEND IS FREE!



Why serious Mining Suppliers & service providers can't afford to miss Technical Visits!

In the ever-evolving mining industry, maintaining a competitive edge is crucial for equipment suppliers and service providers.

One of the most valuable opportunities for these stakeholders is the Association of Mine Managers of Zimbabwe (AMMZ)'s technical visits.

These technical visits are more than just a gathering of industry professionals—it's an opportunity for mining suppliers and service providers to gain first-hand insights into how their products are performing in real-world conditions.

While performance data and laboratory testing can provide useful insights, nothing compares to real-time observing equipment operating under the demanding and unpredictable conditions of a working mine. Suppliers can identify any potential areas of concern, such as wear and tear, inefficiencies,

or compatibility issues that may arise during day-to-day operations. Also, they can hear directly from operators how their equipment is fairing and what can be done to improve operational efficiency.

Also since there is a gathering of Engineers from various mines, the host mine can also be made aware of even better equipment in use at "visiting mines". A good example is a host mine that was using equipment which spent 3 minutes to drill certain holes however visiting mines said they had machinery that drilled at a much faster rate of 1 minute and 30 seconds.

As an equipment supplier if you are not aware of such a conversation or development you are likely to lose the mine as a customer. However, if you are present you will know what to do to retain the client.

Continued on the next page >>

For service providers, the visit offers a unique chance to assess how well their support, maintenance, and technical solutions are meeting the needs of mining operations. Understanding the challenges faced by mine operators directly on the ground ensures that service providers can tailor their offerings to address specific needs, ultimately improving the value they bring to their clients. Potentially your competitor may also target your client therefore you need to always be in the know to stay ahead of the competition.

Direct Engagement with Mine Managers and Operators

One of the most significant benefits of the AMMZ technical visit is the direct interaction between equipment suppliers, service providers, and the mine managers themselves. These decision-makers and on-the-ground operators are best positioned to provide invaluable feedback on how equipment is faring under real operational pressures. Engaging in these discussions not only helps suppliers understand how their products are being used but also opens the door to conversations about future improvements or new innovations that could enhance mine productivity.

Attending the AMMZ technical visit is not just a chance to observe—it's an investment in understanding the needs of Zimbabwe's mines, fostering continuous improvement, and ensuring long-term success in a challenging but rewarding industry.

While equipment suppliers may visit the mines they are supplying regularly going alone will not help in improving operational efficiency without input from different voices (AMMZ visitors).

Identifying Opportunities for Product Enhancement

No product is ever perfect. Suppliers and service providers must continuously adapt and innovate to stay ahead in an increasingly competitive market. By attending the technical visits, companies can gain a clearer understanding of where their products or services might need adjustments or enhancements. Whether it's upgrading safety features, improving energy efficiency, or refining software solutions for better data analysis, understanding operational realities allows for more informed and targeted product development.

Attending the AMMZ technical visit is not just a chance to observe—it's an investment in understanding the needs of Zimbabwe's mines, fostering continuous improvement, and ensuring long-term success in a challenging but rewarding industry.



AMMZ FREDA REBECCA TECHNICAL VISIT

